

KAZAKHSTAN INSTITUTE OF MANAGEMENT, ECONOMICS AND STRATEGIC RESEARCH



KIMEP FACT BOOK

Volume 4

September 2009

(for AYs 2008-09, 2007-08, 2006-07)



ALMATY 2009

TABLE OF CONTENTS

Foreword by President of KIMEP	3
Foreword by Executive Vice President of KIMEP	4
KIMEP at a Glance	5
Establishment, Development and Recognition.....	5
License	5
Attestation.....	6
Ratings	6
Governance.....	7
Independent Board of Trustees	7
University Officers.....	7
KIMEP in Brief.....	8
Organizational Structure	9
Campus Map	10
Students Geography	11
Faculty Members Geography	11
STUDENT BODY STATISTICS.....	12
<i>Admission Statistics</i>	12
Admission Statistics, 2009-10 academic year.....	12
Admission in Two Main Academic Colleges, Fall 2009, <i>Graph</i>	12
<i>Enrollment Statistics</i>	13
Freshman Enrollment, 2004-09.....	13
Number of Enrolled students, 2006-09.....	13
Total Number of Enrolled Students, 2006-09, <i>Graph</i>	14
Average Age of Enrolled Students, 2006-09	14
Average Age of Enrolled Students by Degree Level, 2006-09, <i>Graph</i>	14
Enrolled Students by Gender, 2006-09	15
Average Grades of Enrolled Students, 2007-09.....	15
Number of Students, Eligible to Enroll, by Programs and Gender, 2006-09	16
Number of Students Participating in KIMEP Exchange Programs, 2006-09.....	16
<i>Graduated Students Statistics</i>	17
Conferred Degrees, 2006-09.....	17
Average GPA at Graduation by Programs, 2006-09.....	17
Conferred Degrees by Gender in Numbers, 2006-09.....	17
Conferred Degrees by Gender in Percentage, 2006-09, <i>Graph</i>	18
Length of Study of Undergraduates, 2006-09	18
Length of Study of Graduates, 2006-09	18
<i>Student Organizations</i>	19
Presidents of KIMEP Student Government, 2006-09	19
KIMEP Speakers' Forum, 2006-09.....	19
Student Organizations' List and Scope of Activity, 2006-09.....	19
FACULTY BODY STATISTICS.....	20
<i>Number and Scope</i>	20
Dynamics of Faculty Members Headcount in Two Main Colleges, 2006-09, <i>Graph</i>	20
Faculty Members by Academic Degrees, 2006-09.....	20
Full Time and Part Time Faculty Members at Colleges and Centers, 2006-09	20
Faculty Members' Countries of Origin, 2006-09	21
<i>Professional Development</i>	21
KIMEP Faculty Members Studying Abroad, 2008-09.....	21
KIMEP Faculty Members Studying Abroad, 2007-08.....	22
KIMEP Faculty Members Studying at KIMEP, 2007-09	22
<i>Research Activity by Departments</i>	22
KIMEP Grants Awarded, Numbers	22
KIMEP Grants Awarded, Cost, USD	22
Non-KIMEP Grants Awarded, Numbers	23
Non-KIMEP Grants Awarded, Cost, USD	23
Consulting Contracts Carried Out, Numbers.....	23
Conferences Attended, Numbers	23
Publications, Numbers	23

ALUMNI	24
<i>Number and Scope</i>	24
Number of Alumni by Program, 1994-2009	24
Employment Rate of KIMEP Alumni, 2005-08	24
Number of Alumni by Academic Years, 1994-2009, <i>Graph</i>	24
<i>Employment and Salary</i>	25
Factors Assisting in Getting First Job After Graduating from KIMEP	25
Distribution of Alumni 2008 by Salary Ranges, <i>Graph</i>	25
Distribution of Alumni 2007 by Salary Ranges, <i>Graph</i>	25
Distribution of Alumni by Fields of Occupation, 2006-08	25
ACADEMIC PROGRAMS AND SPECIALIZATIONS	26
<i>Graduate Programs</i>	26
Doctoral Degrees, 2006-10	26
Master Degrees, 2006-10	26
<i>Undergraduate Programs</i>	27
Bachelor Degrees, 2006-10	27
FINANCIAL AID AND FEES	28
<i>Financial Aid</i>	28
Corporate-Funded Financial Aid, 2006-09	28
KIMEP-Funded Financial Aid, 2006-09	29
<i>Tuition</i>	29
Tuition Fees for Kazakhstan and CIS Countries Citizens, 2006-10	29
Tuition Fees for Non-CIS Foreign Countries Citizens, 2006-10	30
<i>Fees</i>	30
Student Dormitory Fees per Month, 2006-10	30
Some Other Fees, 2007-10	30
CAMPUS AND FACILITIES	31
Campus Technical Characteristics, 2008-09	31
Computer Facilities, 2006-10	31
Dynamics of KIMEP Computer Facilities, 2006-10, <i>Graph</i>	31
Library Holdings, Space and Associated Payments, 2006-09	32
KIMEP Teaching Aid Facilities, Fall 2009	32
KIMEP Media Lab Equipment, Fall 2009	32
UNIVERSITY FINANCES	33
KIMEP Budget, 2008-09	33
KIMEP Budget Dynamics, 2006-09	33
ADMINISTRATIVE STAFF	34
<i>Number and Scope</i>	34
Staff Headcount, Fall 2009	34
Staff Headcount, Fall 2008	35
<i>Professional Development</i>	35
Staff Participation in Professional Trainings at College of Continuing Education, 2006-09	35
Administrative Staff Studying Abroad, 2007-09	36
Administrative Staff Studying at KIMEP, 2008-09	36
Administrative Staff Studying at KIMEP, 2007-08	37
SUCCESS STORIES OF KIMEP ALUMNI	38
Nailya Ualibekova, EMBA-2008	38
Anarbek Baktybayev, EMBA-2008	38
Gulmara Rysbekova, BSc-2006, MBA-2007	38
Bakhtiyar Batyrbek, BSc-2005	39
Aida Sapargazinova, EMBA-2004	39
Arman Zholdasbekov, MBA-2001	39
Raushan Raiskhanova, MBA-1999	40
Rinad Temirbekov, MBA-1999	40
Galina Kalinina, MBA-1998	40
KEY CONTACT DETAILS	41

FOREWORD

It is my great pleasure to present the fourth edition of the KIMEP Fact Book.

KIMEP is a non-profit institution of higher education. Its mission is to develop well-educated citizens and to improve the quality of life in Kazakhstan and Central Asia through education, scholarship and community service. KIMEP offers graduate and undergraduate degree programs in business, economics, finance, accounting, public administration, political science, international relations, journalism and mass communication. All classes are taught in English, and all curricula match the highest international standards.



*Dr. Chan Young Bang,
President of KIMEP*

Our diverse student body represents some of the brightest minds and talents of Central Asia and consists of students from all social and economic backgrounds. KIMEP possesses a burgeoning contingent of international students, representing more than 40 different countries, and partnerships with 70 international universities. KIMEP's graduates are employed throughout the public and private sector, forming the next generation of Kazakhstan and Central Asia's leaders.

KIMEP is an incredibly dynamic institution, truly unique in the world today. During my time as president of this great institution, I have seen it grow many times over. Since the year 2000, the number of students at KIMEP has increased six-fold, the number of faculty members has tripled and our operating revenue has increased nearly ten-fold. This remarkable growth has helped KIMEP become the leading academic institution in Central Asia and has positioned it to become a world-leader in education.

The purpose of the KIMEP Fact Book is to give all interested parties a glimpse into the changes and developments of this institution. It serves a key role in this institution's continuing mission of maintaining total transparency to the greater community. Within, you will find a wealth of information about KIMEP's student body, academic programs, faculty, administration and finances.

I hope you enjoy learning more about KIMEP. I am certain you'll find KIMEP a phenomenal institution, a beacon of academic excellence, and a great contributor to the promising future of Central Asia.

FOREWORD

It is my pleasure to present to you this new volume of KIMEP Fact Book that provides information for the last three academic years, reflecting the institute's endeavors and achievements.

This is the fourth edition of KIMEP Fact Book - our regular statistical data source that aims to provide extensive information about our institute with clarity, simplicity and reader-friendliness. The publication also allows a glimpse of the everyday KIMEP life through pictures of our students, teachers and campus.

The Book is intended for a wide range of readers, and we hope that it will serve as an effective source of information on KIMEP.



*Dr. M.H. Rahman,
Executive Vice President of KIMEP*

KIMEP AT A GLANCE

Establishment, Development and Recognition

1992, Jan. 1	KIMEP established by resolution of the President of the Republic of Kazakhstan (RK), Mr. Nursultan Nazarbayev
1992-93 AY	Master of Business Administration (MBA) and Master of Arts in Economics (MA) programs are launched
1993-94 AY	Master of Public Administration (MPA) program is launched
1999-2000 AY	Bachelor programs in Business Administration and Accounting (BSc) and Social Sciences (BSS) are launched
2000, Aug.	KIMEP launches the first in the Republic of Kazakhstan on-line registration system and receives a patent for it
2000-01 AY	Bachelor program in Economics (BAE) is launched
2002-03 AY	Master programs in International Relations (MIR) and International Journalism (MAIJ) are launched
2003, Dec.	President Dr. Bang receives one of the highest civil awards of the Republic of Kazakhstan: the Dostyk Medal of Second Degree
2003-04 AY	Bachelor Program in International Journalism (BAIJ) is launched
2004, July 7	Institute is reorganized into a nonprofit Joint Stock Company
2004-05 AY	KIMEP receives “Platinum Tarlan” award in ‘Enlightenment’ category Bang College of Business (BCB) joins the Association of Advanced Collegiate Schools (AACSB International)
2005, May	New state-of-the-art Executive Education Centre for College of Continuing Education (CCE) is opened
2006-07 AY	Doctor of Business Administration program is launched
2006, Sept. 22	New custom-built Library Building opened
2007-08 AY	Master in Teaching English to Speakers of Other Languages (MA TESOL) program is launched
2008, March	New state-of-the-art Academic Building opened The President of Kazakhstan Nursultan Nazarbayev visits KIMEP to tour the New Academic Building and meet students
2009-10 AY	Master in International Law (LLM) program is launched

License

1995, April 17	Republic of Kazakhstan ‘Law on Licensing Activity’ enacted, obliging higher education institution to be licensed
1997, Oct. 28	KIMEP receives Temporary State License on undertaking of education activity from the RK Ministry of Education, Culture, and Healthcare MBA, MPA and MA Programs of KIMEP are licensed by the RK Ministry of Education, Culture, and Healthcare
1999, Aug. 19	BSc, BSS IR, BSS PS and BSS PA Programs of KIMEP are licensed by the RK Ministry of Science and Higher Education
2000, June 9	KIMEP receives Permanent State License for intra- and extra-mural programs in Economics and Management
2002, Jan.14	KIMEP receives Permanent State License on undertaking of graduate and postgraduate education activity from the RK Ministry of Education and Science BAE, BSc, BSS IR, BSS PS, BSS PA, MPA, MBA, MA Programs of KIMEP are licensed by the RK Ministry of Education and Science
2003, June 18	BAIJ, MIJMC, MIR Programs are licensed by the RK Ministry of Education and Science

2004, Sept. 7	In connection with change of proprietary status, KIMEP JSC receives new Permanent State License on undertaking of graduate and postgraduate professional education activity from the RK Ministry of Education and Science BAE, BSc, BSS IR, BSS PS, BSS PA, BAIJ, MPA, MBA, MA Programs of KIMEP are licensed by the RK Ministry of Education and Science
2004, Nov. 23	Order on conducting of an experimental DBA Program in KIMEP is issued by the RK Ministry of Education and Science
2006, Dec. 13	MA TESOL Program is licensed by the RK Ministry of Education and Science
2008, Dec. 4	LLM Program is licensed by the RK Ministry of Education and Science
2009, Oct. 13	Order on conducting of an experimental DBA Program in KIMEP is prolonged by the RK Ministry of Education and Science

Attestation

1999, June 7	The Republic of Kazakhstan Law ‘On Education’ is adopted
1999, Sept. 3	Regulation on State Attestation of Education Organizations is promulgated
2000, Jan. 6	Program and Methodical Recommendations on State Attestation of Higher Education Institutions of the Republic of Kazakhstan are published
2002, Sept. 25	Order on State Attestation of Kazakhstan Institute of Management, Economics and Strategic Research issued
2002, Nov. 7	BSc, MA, MPA, and MBA Programs of KIMEP receive State Attestation
2003, March 25	BAE, BSS IR, BSS PS, BSS PA Programs of KIMEP receive State Attestation
2007, June 27	The new Republic of Kazakhstan Law ‘On Education’ is adopted
2008, April 25	KIMEP and its Programs re-attested, State Attestation certificate re-issued

Ratings

Date	Rating Agency	Title of Rating	KIMEP’s Position	
2006, May	National Accreditation Center of the Ministry of Education and Science of RK (NAC of MES of RK)	General rating of 60 leading universities of RK	1 st rank in the category of humanitarian – economic universities	
2007, June	NAC of MES of RK	General rating of 60 leading universities of RK	1 st rank in the category of humanitarian – economic universities	6 th rank in the general rating list of universities
2008, July	Independent Quality Assurance Agency of RK (IQAA RK)	General ranking of 60 universities of RK	1 st rank in the category of humanitarian – economic universities	8 th rank in the general ranking list of universities
2008, Oct.	NAC of MES of RK	General rating of 60 leading universities of RK	1 st rank in the category of humanitarian – economic universities	10 th rank in the general rating list of universities
2009, May	NAC of MES of RK	Rating of 81 HEIs of RK providing bachelor programs	1st rank in the category of “Management” and “Public administration and local government” specialties. 2nd rank –in “Political science”, 4th rank on 2 specialties: “Journalism” and “Economics” under the “Social sciences, economics and business” group of specialties	
2010, Jan.	Cybermetrics Lab, a research group belonging to the Consejo Superior de Investigaciones Cientificas (CSIC), Spain	Webometrics Ranking of World Universities’ websites: 18,000 worldwide and 69 in Kazakhstan	KIMEP web-site receives 1 st rank among 69 screened HEI of Kazakhstan	

Governance

Shareholders: Ministry of Education and Science of the Republic of Kazakhstan and Dr. Chan Young Bang

Independent Board of Trustees

Daniel Connelly	<i>Chairman of the Board of Trustees, CEO, Citibank Kazakhstan</i>
Chan Young Bang	<i>President of KIMEP</i>
Daulet Sembayev	<i>Honorary Doctor of KIMEP, Deputy Chairman of the Board of Directors of Kazkommertsbank, Kazakhstan</i>
Eduard Uteпов	<i>Chairman of the Committee on State Property and Privatization of the Ministry of Finance of the Republic of Kazakhstan</i>
Hans Dewaele	<i>General Manager, Proctor & Gamble Kazakhstan</i>
Hartmut Fischer	<i>Professor of Economics, University of San Francisco, USA</i>
Igor Tupikov	<i>President of JSC Buran Boiler, Kazakhstan</i>
Jeff Erlich	<i>President of Eurasia Foundation of Central Asia</i>
Kalimzhan Ibrahimov	<i>Head of the Directorate for Non-Governmental Organizations with State Participation of the Committee of State Property and Privatization of the Ministry of Finance of the Republic of Kazakhstan</i>
Nadezhda Pogorelova	<i>General Director, Economic Center Consulting Company, Kazakhstan</i>
Naiman Kalabaev	<i>Chairman of the Committee for Control in the Sphere of Education and Science of the Ministry of Education and Science of the Republic of Kazakhstan</i>
Serik Akhanov	<i>Chairman of the Association of Financial Professionals of Kazakhstan</i>
Serik Omirbaev	<i>Director of the Department for Higher and Post-University Education of the Ministry of Education and Science of the Republic of Kazakhstan</i>
Stephen Nye	<i>Partner, KPMG Audit, Luxembourg</i>
Tlektés Espolov	<i>Rector of the Kazakh National Agrarian University</i>
Winfred Thompson	<i>Former President of the American University of Sharjah, UAE</i>

University Officers

Dr. Chan Young Bang	President
Dr. M.H. Rahman	Executive Vice President (EVP)
Dr. Dana Stevens	Vice President on Academic Affairs (VPAA)
Dr. Ewan Simpson	Vice President of Planning and Development (VPPD)
vacant	Vice President on Administration and Finance (VPAF)
Dr. Sang Hoon Lee	Dean of Bang College of Business (BCB)
Dr. John Dixon	Dean of College of Social Sciences (CSS)
Dr. Bulent Dumlupinar	Dean of College of Continuing Education (CCE)
Dr. Sanithia Boyd	Dean of School of General Education (GE)
Kenneth Saycell, MA	Director of Language Center (LC)
Shiraz Paracha, MA	Dean of Student Affairs
Ronald Voogdt, MA, MSc	Interim Dean of Enrollment Management

KIMEP IN BRIEF

Logo



Color

Blue
(Pantone blue 072)

Mascot



Motto

*Education to Change
Society*

ACADEMIC UNITS, Main Characteristics

Bang College of Business	College of Social Sciences	Language Center	College of Continuing Education	School of General Education
--------------------------	----------------------------	-----------------	---------------------------------	-----------------------------

Areas of Teaching by Units

<ul style="list-style-type: none"> – Accounting – Finance – Law Program – Management – Marketing 	<ul style="list-style-type: none"> – Economics Department – Journalism and Mass Communications – Political Science and International Relations – Public Administration 	<ul style="list-style-type: none"> – English Language – Kazakh Language – Foreign Languages 	<ul style="list-style-type: none"> – Preparatory Program – Professional Development and Certificate Programs – World Languages Program 	<ul style="list-style-type: none"> – Environmental Studies – Ethics and Philosophy – Geography – Health and Lifestyles – Mathematics – University Life
---	--	--	---	--

Faculty Headcount by Units

Full Time 55 Part Time 8	Full Time 33 Part Time 16	Full Time 55 Part Time 25	Full Time 6 Part Time 67	Full Time 7 Part Time 5*
-----------------------------	------------------------------	------------------------------	-----------------------------	-----------------------------

Academic Programs**

5 Bachelor, 8 Master's, 1 Doctoral, 3 Certificate Programs

Bachelor: BSc	Bachelor: BAE, BAIJ, BSS IR, BSS PA		Certificate: – Professional Development – Preparatory Courses – World Languages	
Master: MBA, LLM, ExMBA	Master: MA, MIR, MPA, MAIJ	Master: MATESOL		
Doctoral: DBA				

* General Education School also employs 28 FTE from other colleges and centers

** For detailed information on Academic Programs please refer to pp. 26-27

STUDENTS, Fall 2009

Bachelors	Masters	Doctoral students
Headcount 3984	Headcount 611	Headcount 19
Average age 19.6	Average age 25.5	Average age 34.9
Alumni 2915	Alumni 2825	Alumni n/a

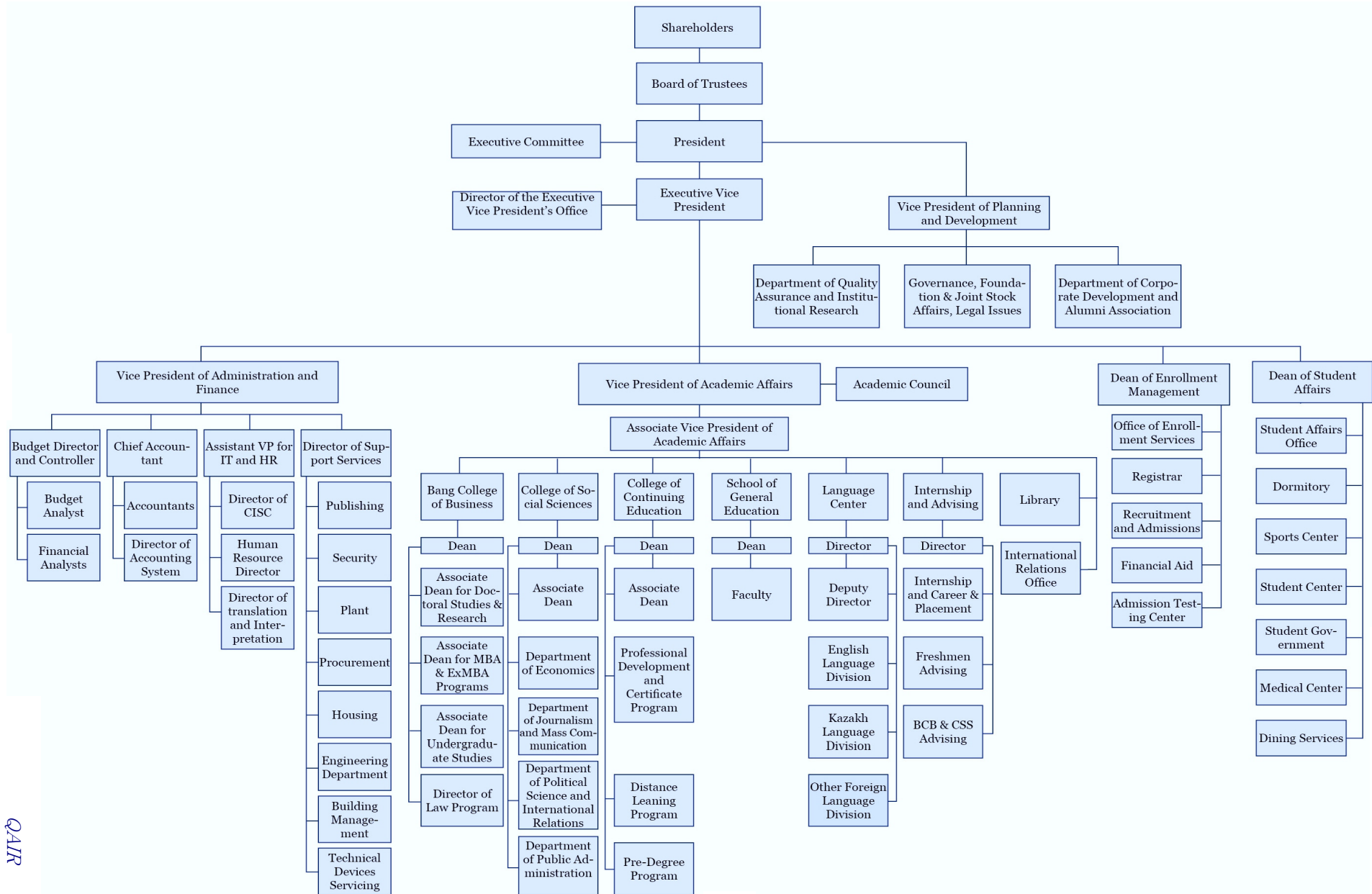
UNIVERSITY FINANCES

Budget	Tuition	Financial Aid
Academic year 2008-09	As of Fall 2009, KZT per credit	For 2008-09 AY, thousands KZT
KZT 3 693 million (USD 24.6 million)	Undergraduates 19,300-26,300	KIMEP funded 155,020
	Graduates 26,700-38,000	Externally funded 283,804

ADMINISTRATIVE STAFF, Fall 2009

Management	Subordinates
70	468

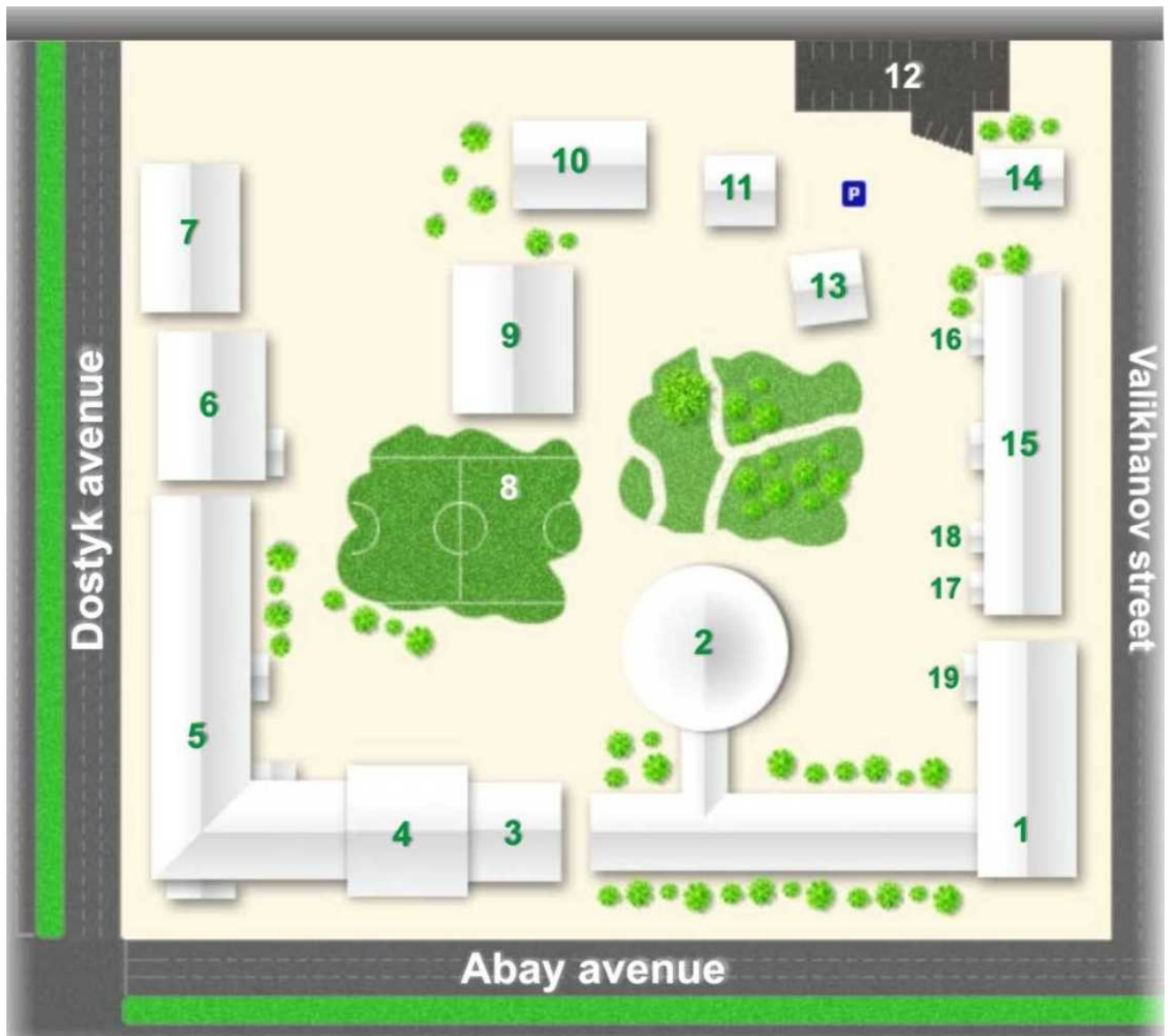
ORGANIZATIONAL STRUCTURE OF KIMEP, as of Fall 2009



6

QAIR

CAMPUS MAP*

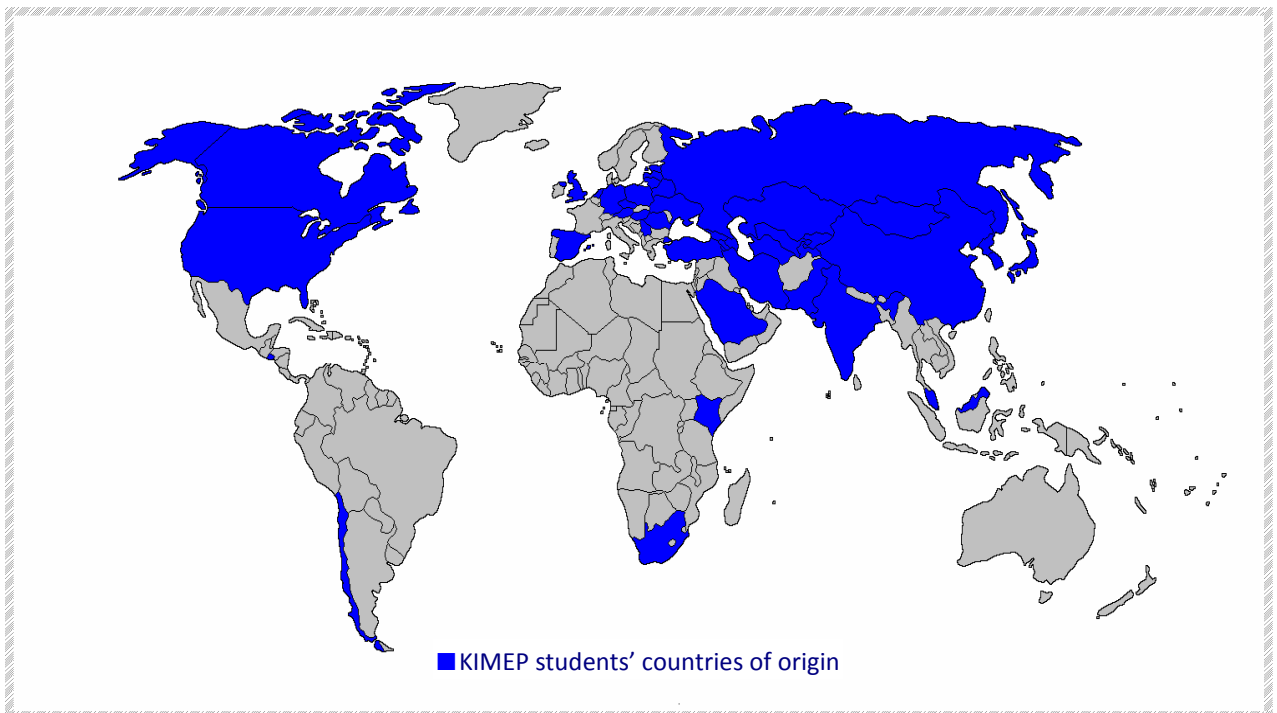


*KIMEP campus map information is effective as of October 2009

- | | |
|--|--|
| <ol style="list-style-type: none"> 1. Academic Building (Valikhanov)
College of Social Sciences
KIMEP Grill 2. Academic Building Lecture Halls #1 and #2 3. Great Hall 4. Fun Club 5. Administrative Building (Dostyk)
Bang College of Business 6. Language Center, Sports Complex 7. Apartment House 8. Sports Field 9. New Academic Building | <ol style="list-style-type: none"> 10. Olivier Giscard d'Estaing Library 11. Publishing Department 12. Parking 13. Plant Department 14. Garage 15. Dormitory Building 16. College of Continuing Education 17. Registration Office 18. Medical Center and Student Affairs Office 19. Admission Office |
|--|--|

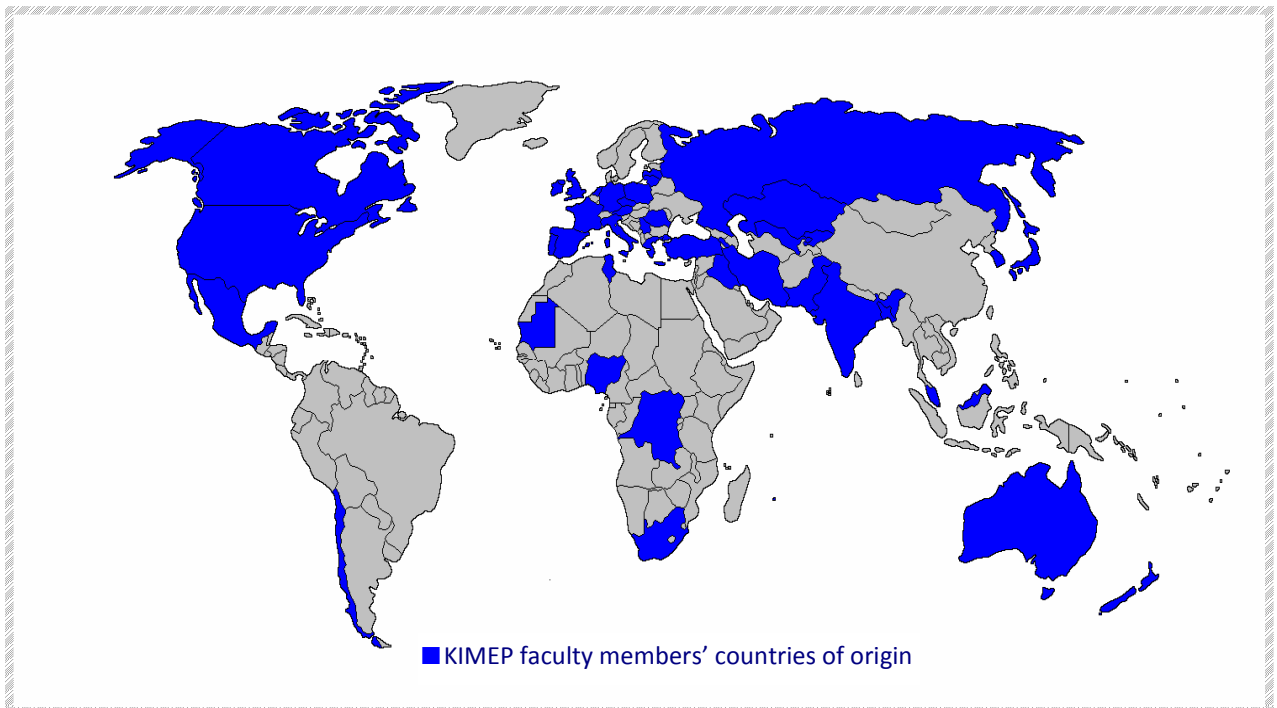
* Information provided by President's Office.

KIMEP STUDENTS' GEOGRAPHY*



Countries: Armenia, Austria, Azerbaijan, Belarus, Canada, Chile, China, Czech Republic, Estonia, Georgia, Germany, Great Britain, Hong Kong, Hungary, India, Iran, Japan, Kazakhstan, Kenya, Kyrgyzstan, Latvia, Lithuania, Malaysia, Mongolia, Netherlands, North Korea, Pakistan, Poland, Romania, Russia, Salvador, Saudi Arabia, Serbia, Singapore, South Africa, South Korea, Spain, Tajikistan, Turkey, Turkmenistan, Ukraine, USA, Uzbekistan.

KIMEP FACULTY GEOGRAPHY**



Countries: Armenia, Australia, Austria, Bangladesh, Canada, Chile, Czech Republic, Democratic Republic of Congo, France, Germany, Great Britain, Greece, India, Iran, Iraq, Ireland, Italy, Japan, Kazakhstan, Kyrgyzstan, Latvia, Malaysia, Mauritania, Mauritius, Mexico, Netherlands, New Zealand, Nigeria, Pakistan, Poland, Portugal, Romania, Russia, Serbia, Singapore, South Africa, South Korea, Spain, Tunisia, Turkey, USA, Uzbekistan

* Information is provided by Department of Enrollment Management

** Information is provided by the Human Resources Department



STUDENT BODY STATISTICS*

ADMISSION STATISTICS

Admission Statistics, 2009-10 academic year**

Undergraduate

Status	BAE	BAIJ	BSC	BSSIR	BSSPA	BSSPS	Total
Applied	408	54	1052	385	212	13	2124
Admitted	295	40	829	279	134	0	1577
Enrolled	117	17	464	113	60	0	771

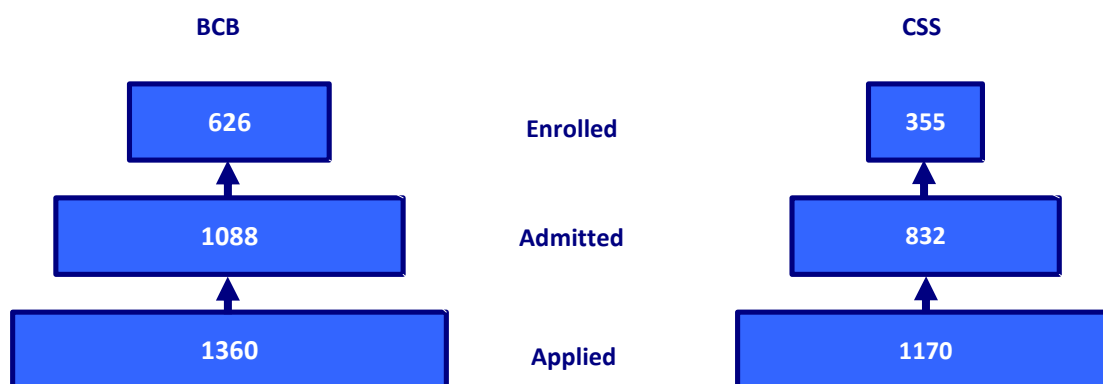
Graduate

Status	ExMBA	LLM	MA	MAIJ	MATESOL	MBA	MIR	MPA	Total
Applied	11	73	30	1	4	224	28	39	410
Admitted	11	61	28	0	1	187	26	30	344
Enrolled	11	36	19	0	1	115	13	16	211

Overall

Admission Rates, %	2009-10
Annual admitted/applied rate	76
Annual enrolled/admitted rate	51
Annual enrolled/applied rate	39

Admission in Two Main Academic Colleges, Fall 2009



* Information for this part is provided by Enrollment Management Division, Office of International Relations and Dean of Student Affairs Office.

** Data effective as of September 28, 2009

ENROLLMENT STATISTICS

Freshman Enrollment, 2004-09*

Undergraduate

Program	Fall 2009	Fall 2008	Fall 2007	Fall 2006	Fall 2005	Fall 2004
BAE	117	89	214	224	326	216
BAIJ	17	45	67	66	47	36
BSc	464	635	605	503	417	546
BSS	-	-	432	322	285	311
BSS IR	113	0	-	-	-	-
BSS PA	59	77	-	-	-	-
BSS PS	0	96	-	-	-	-
Total	770	942	1318	1115	1075	1109

Graduate

Program	Fall 2009	Fall 2008	Fall 2007	Fall 2006	Fall 2005	Fall 2004
DBA	0	3	-	-	-	-
LLM	36	-	-	-	-	-
MA	19	12	22	29	16	24
MAIJ	0	5	11	13	14	29
MATESOL	1	9	15	-	-	-
MBA	114	160	132	117	128	117
MIR	13	9	11	7	8	25
MPA	16	27	16	23	21	32
Total	199	225	207	189	187	227

* Data for Fall 2009 is effective as of October 8, 2009

Number of Enrolled Students, 2006-09

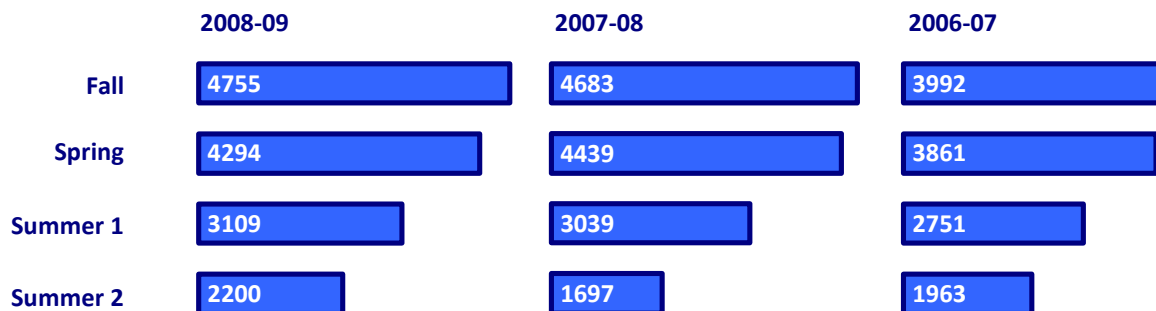
Undergraduate

Programs	2008-09				2007-08				2006-07			
	F2008	S2009	SU1	SU2	F2007	S2008	SU1	SU2	F2006	S2007	SU1	SU2
BAE	589	478	335	278	727	665	426	196	711	658	429	313
BAIJ	183	172	108	69	192	175	105	57	147	146	100	76
BSc	2470	2268	1681	1188	2204	2135	1544	988	1857	1823	1366	905
BSS	-	-	-	-	1067	1005	-	-	825	797	565	498
BSS IR	-	-	1	87	-	-	-	-	-	-	-	-
BSSPA	695	596	459	301	-	-	532	225	-	-	-	-
BSSPS	282	236	172	73	-	-	157	92	-	-	-	-
Total	4219	3750	2756	1996	4190	3980	2764	1558	3540	3424	2460	1792

Graduate

Programs	2008-09				2007-08				2006-07			
	F2008	S2009	SU1	SU2	F2007	S2008	SU1	SU2	F2006	S2007	SU1	SU2
DBA	15	18	1	0	8	10	2	0	8	8	6	0
LLM	-	-	3	4	-	-	-	-	-	-	-	-
MA	36	38	17	9	43	37	13	9	36	30	14	23
MAIJ	13	15	7	1	22	21	9	-	31	23	10	4
MATESOL	18	19	-	-	15	15	11	-	-	-	10	-
MBA	380	380	270	166	339	316	202	114	305	304	209	112
MIR	21	19	14	5	19	18	12	4	22	24	16	13
MPA	53	55	41	19	47	42	26	12	50	48	26	19
Total	536	544	353	204	493	459	275	139	452	437	291	171

Total Number of Enrolled Students, 2006-09



Average Age of Enrolled Students, 2006-09*

Undergraduate

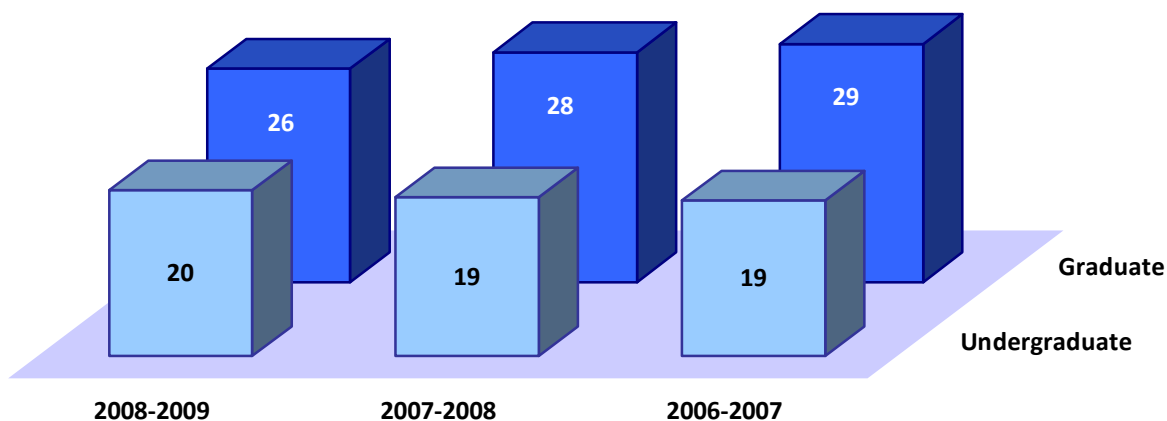
Program	2008-09	2007-08	2006-07
BAE	20	19	19
BAIJ	19	19	19
BSc	20	19	20
BSS	-	19	19
BSS PA	20	-	-
BSS PS	19	-	-
Total	20	19	19

Graduate

Program	2008-09	2007-08	2006-07
DBA	35	38	32
ExMBA	33	33	-
MA	24	24	23
MAIJ	24	25	29
MATESOL	37	38	-
MBA	25	25	24
MIR	24	25	24
MPA	25	26	24
Total	26	26	24

* As of the beginning of academic year

Average Age of Enrolled Students by Degree Level, 2006-09



Enrolled Students by Gender, 2006-09**

Undergraduate

Program	2008-09				2007-08				2006-07			
	Male	%	Female	%	Male	%	Female	%	Male	%	Female	%
BAE	272	49	286	51	350	49	358	51	309	47	345	53
BAIJ	27	16	147	84	31	17	152	83	26	19	110	81
BSc	926	41	1348	59	906	42	1251	58	751	43	989	57
BSS	-	-	-	-	439	43	577	57	324	43	428	57
BSSPA	289	43	380	57	-	-	-	-	-	-	-	-
BSSPS	108	44	136	56	-	-	-	-	-	-	-	-
Total	1622	41	2297	59	1726	42	2338	58	1410	43	1872	57

Graduate

Program	2008-09				2007-08				2006-07			
	Male	%	Female	%	Male	%	Female	%	Male	%	Female	%
DBA	6	40	9	60	2	25	6	75	3	37.5	5	62.5
MA	13	39	20	61	16	37	27	63	13	36	23	64
MAIJ	1	8	11	92	3	14	18	86	3	10	28	90
MATESOL	1	6	17	94	1	7	14	93	-	-	-	-
MBA	124	35	226	65	106	32	221	68	89	31	202	69
MIR	5	25	15	75	5	26	14	74	8	36	14	64
MPA	15	29	36	71	12	26	35	74	13	27	36	73
Total	165	33	334	67	145	30	335	70	129	30	308	70

** Data effective as of December of corresponding academic years

Average Grades of Enrolled Students, 2007-09

Undergraduate

Program	2008-09				2007-08			
	F2008	S2009	SU1/2009	SU2/2009	F2007	S2008	SU1/2008	SU2/2008
BAE	C+	B-	B-	B-	C+	C+	C+	B-
BAIJ	B-	B	B	C+	B	B	B-	B-
BSc	B	B	B	B	B	B	B	B-
BSS	-	-	-	-	B-	C+	B-	B-
BSS IR	-	-	-	D	-	-	-	-
BSS PA	C+	B-	B-	B-	-	-	-	-
BSS PS	B-	B	B-	B	-	-	-	-
Total	B-	B	B	B	B-	B-	B-	B-

Graduate

Program	2008-09				2007-08			
	F2008	S2009	SU1/2009	SU2/2009	F2007	S2008	SU1/2008	SU2/2008
DBA	B+	A-	A	-	A	A-	-	-
LLM	-	B+	A-	B-	-	-	-	-
MA	B+	B+	B+	A-	B	B+	B+	B+
MAIJ	A-	A	A-	B+	A-	A-	A	-
MATESOL	B+	A-	-	-	A	A-	B+	-
MBA	B+	B+	A-	A-	B+	B+	B+	A-
MIR	B+	A-	A	A-	B+	B+	B	A-
MPA	B	B+	A-	B+	B+	B+	B+	B+
Total	B+	B+	A-	A-	B+	B+	B+	B+

Number of Students, Eligible to Enroll, by Programs and Gender, 2006-09

Undergraduate

Program	2008-09			2007-08			2006-07		
	Male	Female	Total	Male	Female	Total	Male	Female	Total
BAE	479	489	968	530	521	1051	550	561	1111
BAIJ	59	257	316	59	233	292	50	182	232
BSc	1781	2332	4113	1374	1774	3148	1201	1446	2647
BSS	737	981	1718	735	972	1707	592	828	1420
Total	3056	4059	7115	2698	3500	6198	2393	3017	5410
%	42.95	57.05	100	43.53	56.47	100	44.20	55.80	100

Graduate

Program	2008-09			2007-08			2006-07		
	Male	Female	Total	Male	Female	Total	Male	Female	Total
DBA	13	12	25	13	9	22	9	8	17
ExMBA	18	8	26	18	2	20	-	-	-
MA	47	68	115	47	63	110	49	57	106
MAIJ	18	42	60	20	51	71	16	69	85
MATESOL	1	31	32	1	17	18	-	-	-
MBA	302	468	770	228	401	629	176	318	494
MIR	25	40	65	27	29	56	25	30	55
MPA	48	68	116	51	56	107	39	55	94
Total	472	737	1209	405	628	1033	314	537	851
%	39.04	60.96	100	39.21	60.79	100	36.90	63.10	100

Number of Students Participating in KIMEP Exchange Programs, 2006-09

Institutions	2008-09	2007-08	2006-07	Total
Aarhus School of Business, Denmark	6	6	4	16
Algarve University, Portugal	1	1	-	2
Arnhem Business School, Netherlands	-	6	-	6
Corvinus University of Budapest, Hungary	1	1	2	4
Deusto University, Spain	4	2	-	6
Eindhoven Technical University, Netherlands	1	1	-	2
EWHA, South Korea	3	-	-	3
Fatih University, Turkey	5	4	-	9
Hong Kong Baptist University, Hong Kong	2	4	4	10
Humboldt university, Germany	2	3	-	5
Hunkuk University of Foreign Studies, South Korea	1	-	3	4
Huron University, UK	-	2	-	2
International German Language Course at Schmalkalden, Germany	-	1	-	1
International Summer School at Schmalkalden, Germany	-	5	5	10
Istanbul Stock Exchange, Turkey	-	1	-	1
Jönköping International Business School, Sweden	5	5	4	14
Korea University Business School, South Korea	5	-	-	5
Kyung Hee University, South Korea	2	3	4	9
Kyungsung University, South Korea	1	-	-	1
Kyungsung University, South Korea, Summer School	2	3	-	5
Ljubljana University, Slovenia	4	2	-	6
Lund University, Sweden	-	4	-	4
Middle East University of Technology, Turkey	2	1	-	3
Nevada university, USA	1	-	-	1
Sogang University, South Korea	4	1	-	5
SolBridge International Business School, South Korea	2	-	-	2
Stockholm School of Economics, Latvia	2	2	2	6
Sungkyunkwan University, South Korea	7	4	4	15
Tilburg University, Netherlands	5	-	-	5
University of Applied Sciences, Austria	1	-	-	1
University of Applied Sciences, Germany	-	14	5	19
University of Bucharest, Romania	-	1	-	1
University of Northern Colorado, USA	-	1	2	3
Wyoming University, USA	3	-	-	3
Yonsei University, South Korea	2	1	-	3
Total	74	79	39	192

GRADUATED STUDENTS STATISTICS**Conferred Degrees, 2006-09****Undergraduate*

AYs	BAE	BAIJ	BSc	BSS	BSSPA	BSSPS	Total
2008 - 09	128	34	519	-	106	37	824
2007 - 08	78	17	403	94	-	-	592
2006 - 07	70	8	215	56	-	-	349

Graduate

AYs	MBA	MA	MPA	MIR	MAIJ	ExMBA	EMBA	Total
2008 - 09	114	12	16	6	7	11	-	166
2007 - 08	91	3	15	8	10	-	25	152
2006 - 07	69	12	14	12	20	-	23	150

* data effective as of 9 October 2009

Average GPA at Graduation by Programs, 2006-09*Undergraduate*

Program	2008-09	2007-08	2006-07
BAE	2,89	2,99	3,20
BAIJ	3,22	3,54	3,60
BSc	3,17	3,21	3,27
BSSPA	2,90	2,92	3,09
BSSPS	3,02	3,15	3,00
Total	3,09	3,17	3,28

Graduate

Program	2008-09	2007-08	2006-07
ExMBA	3,46	-	-
MA	3,62	3,46	3,67
MAIJ	3,77	3,87	3,48
MBA	3,57	3,57	3,59
MIR	3,58	3,70	3,37
MPA	3,46	3,61	3,53
Total	3,56	3,64	3,53

* data effective as of 15 September 2009

Conferred Degrees by Gender in Numbers, 2006-09*Undergraduate*

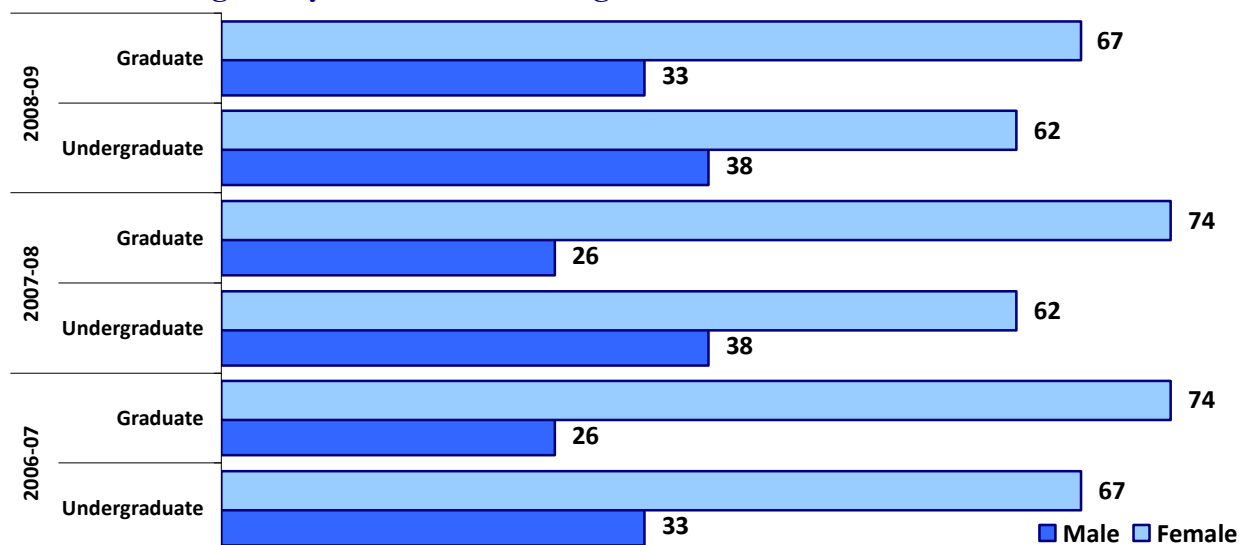
Program	2008-09**			2007-08			2006-07		
	Male	Female	Total	Male	Female	Total	Male	Female	Total
BAE	49	79	128	37	41	78	27	43	70
BAIJ	6	28	34	1	16	17	2	6	8
BSc	193	326	519	154	249	403	67	148	215
BSSPA	44	62	106	16	42	58	4	16	20
BSSPS	17	20	37	17	19	36	14	22	36
Total	309	515	824	225	367	592	114	235	349

Graduate

Program	2008-09**			2007-08			2006-07		
	Male	Female	Total	Male	Female	Total	Male	Female	Total
ExMBA	9	2	11	-	-	-	-	-	-
MA	1	11	12	1	2	3	6	6	12
MAIJ	1	6	7	1	9	10	2	18	20
MBA	34	80	114	25	66	91	21	48	69
MIR	4	2	6	4	4	8	1	11	12
MPA	5	11	16	2	13	15	3	11	14
Total	54	112	166	33	94	127	33	94	127

** data effective as of 9 October 2009

Conferred Degrees by Gender in Percentage, 2006-09



Length of Study of Undergraduates, 2006-09

Program	AY	Length of Study, years, %						Total, %
		3	4	5	6	7	8	
BAE	2008-09	4	60	25	5	4	2	100
	2007-08	5	72	14	6	3	-	100
	2006-07	14	71	10	3	2	-	100
BAIJ	2008-09	9	68	23	-	-	-	100
	2007-08	6	71	23	-	-	-	100
	2006-07	25	75	-	-	-	-	100
BSc	2008-09	6	57	28	7	1	1	100
	2007-08	4	75	15	5	1	0	100
	2006-07	5	73	20	1	1	-	100
BSS PA BSS PS	2008-09	7	49	40	4	-	-	100
		11	44	31	5	3	6	100
BSS	2007-08	1	69	24	4	2	-	100
	2006-07	-	56	24	13	5	2	100
Total	2008-09	6	56	29	6	2	1	100
	2007-08	3	73	17	5	2	0	100
	2006-07	7	70	18	3	2	0	100

Length of Study of Graduates, 2006-09

Programs	AY	Length of Study, years, %						Total, %
		1	2	3	4	5	6	
ExMBA	2008-09	-	100	-	-	-	-	100
MA	2008-09	-	33	59	-	-	8	100
	2007-08	33	-	34	-	33	-	100
	2006-07	8	75	9	-	8	-	100
MAIJ	2008-09	-	86	14	-	-	-	100
	2007-08	-	70	30	-	-	-	100
	2006-07	-	45	40	5	10	-	100
MBA	2008-09	5	30	30	22	9	4	100
	2007-08	8	25	53	12	2	-	100
	2006-07	9	35	46	10	-	-	100
MIR	2008-09	17	33	-	17	33	-	100
	2007-08	13	25	25	25	12	-	100
	2006-07	23	23	54	-	-	-	100
MPA	2008-09	6	44	31	13	-	-	100
	2007-08	7	33	47	13	-	-	100
	2006-07	-	36	43	21	-	-	100
Total	2008-09	4	39	29	17	7	4	100
	2007-08	8	29	48	12	3	-	100
	2006-07	8	39	42	9	2	-	100

STUDENT ORGANIZATIONS

Presidents of KIMEP Student Government, 2006-09

Term	Name	Program	Year of Entry
2008-09	Kamila Lukpanova	BSS	2006
2007-08	Alibek Salpekov	BSc	2005
2006-07	Azamat Yegizbayev	BSc	2004

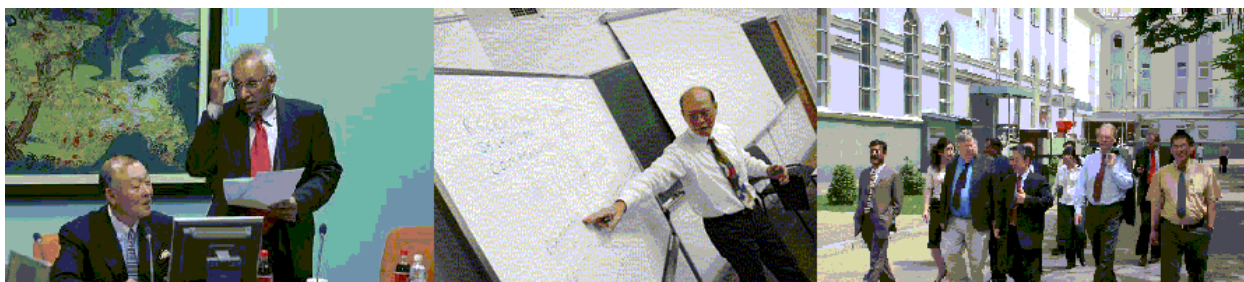
KIMEP Speakers' Forum*, 2006-09

Events	2008-09	2007-08	2006-07
Social events	8	14	0
Meetings	10	18	3
Conferences, seminars, lectures, workshops, consultancy sessions	14	10	5
Presentations	14	10	4
Festivals, concerts and performances	13	10	0
Contests and competitions	8	3	1
Screening of the films	45	13	0
Total	112	78	13

* The Speakers' Forum, administered by Office of Student Affairs, is responsible for organizing social and educational events for KIMEP students

Student Organizations' List and Scope of Activity, 2006-09

Organization's title	Scope of activity	2009	2008	2007	2006
AIIESEC	Human potential development for positive changes	✓	✓	✓	✓
Amanat	Promotion of Kazakh language and culture	✓			
Association of KIMEP Alumni	Fruitful co-action of Alma Mater and Alumni	✓	✓	✓	✓
Brand	Finding/promoting dance, music, VJ, model talents	✓			
Business Incubator Group	Creation of a professional business environment	✓	✓	-	-
CreATeam	Enrichment of campus life by student development	✓	✓	✓	✓
Diplomatic Briefing Club	Bridging of academic knowledge and future careers	✓	✓	✓	✓
Ferrum	Promotion of healthy lifestyle by contests/events	✓	✓	-	-
Future Business Group (FBG)	Charity, promotion of student community	✓	✓	✓	✓
Future Leaders of Kazakhstan	Organizing of international seminars	✓	✓	-	-
Igency	Participation in fund-raising activities	-	-	✓	-
Intellectual Debate Club (IDC)	Training in public speaking and critical thinking skills	✓	✓	✓	✓
International Youth Fellowship	Community service, world camp	-	-	✓	-
Karandash	Promotion of students' art and decoration skills	✓	✓	✓	-
Kazakhstan English Language Theater	Promotion of English theater culture	✓	✓	✓	✓
KIMEP Cheerleader Club	Support for KIMEP sport activities	-	-	-	✓
KIMEP Culture and Language Club	Improvement of language skills in speaking clubs	✓	-	✓	-
KIMEP Film Society	Promotion of cinema culture and awareness	✓	✓	✓	✓
KIMEP International Student	Organization of student events and activities	✓	✓	✓	✓
KIMEP Magic: The Gathering Club (MTG Club)	Promotion of intellectual collectible card playing game	✓	-	✓	-
KIMEP Patriots	Promotion of KIMEP positive image	✓	✓	-	-
KIMEP Pie	Issuing of informative and entertaining periodical	✓	✓	-	-
KIMEP Promo Agency	Organization of cultural student events	-	-	✓	-
KIMEP Prospective Students Organization	Search for promising student talents	-	-	✓	-
Students in Free Enterprise (SIFE)	Development of students' entrepreneurial skills	✓	✓	✓	✓
KIMEP Sport Club	Promotion of sports and sports events	-	✓	-	✓
KIMEP Student Fee Committee	Representation of students' financial interests	-	-	-	✓
KIMEP Times	Regular provision of information about KIMEP	✓	✓	✓	✓
KIMEP Society Protecting Animals	Promotion of humane attitude to homeless animals	✓	✓	-	-
KVN Team	Participation in the comic showcase 'KVN'	✓	✓	✓	✓
KZone	Organization of entertainment activities	-	-	✓	-
Public Administration Absolute Power	Organization of trainings, events and contests	✓	✓	-	-
Residential Assistants' Association	Facilitation of Dormitory's daily operation/safety	✓	✓	✓	✓
Royal P.R. (Royal Production and Records)	Discovery/fostering of music and performance talents	✓	✓	-	-
ShowTime	Organizing concert show for all students once a year	✓	✓	✓	✓
Street Dance	Discovery/promotion of R'n'B and Hip-Hop talents	✓	✓	-	-
Student Government	Representation/promotion of students' interests	✓	✓	✓	✓
Tarlan	Defending of KIMEP students' legal interests	✓			
TITANS	Promotion of American Football among students	✓	✓	✓	-
Youth Parliament of Kazakhstan	Representation/promotion of students' interests	✓	✓	✓	✓
ZOOM	Development of students' professional photo skills	✓	✓	-	-
Total		33	29	25	19



FACULTY BODY STATISTICS*

NUMBER AND SCOPE

Dynamics of Faculty Members Headcount in Two Main Colleges, 2006-09

	BCB	CSS
2008-09	63	78
2007-08	60	86
2006-07	54	80

Faculty Members by Academic Degrees, 2006-09

	2008-09**	2007-08	2006-07
Ph.D.	77	65	51
Doctor of Science	8	9	9
Candidate of Science	43	34	29
Masters and otherwise qualified	186	158	123
Total	314	266	212

**As of the beginning of academic year

Full Time and Part Time Faculty Members at Colleges and Centers, 2006-09

Departments	2008-09**		2007-08		2006-07	
	FT	PT	FT	PT	FT	PT
Bang College of Business	56	7	52	8	47	7
College of Social Sciences	54	24	60	26	56	24
Language Center	71	4	79	35	54	18
Computer and Information Systems Center	7	2	6	0	6	0
Center for Korean Studies	1	1	-	-	-	-
College of Continuing Education	4	69	-	-	-	-
School of General Education	2	4	-	-	-	-
Law School	5	3	-	-	-	-
Total	200	114	197	69	163	49

**As of the beginning of academic year

* Information for this part is provided by Enrollment Management Division, Human Resource Department, and Office of Vice-President of Academic Affairs.

Faculty Members' Countries of Origin, 2006-09

Countries	2008-09	2007-08	2006-07
Armenia	-	✓	-
Australia	✓	✓	-
Austria	✓	-	-
Bangladesh	✓	✓	✓
Canada	✓	✓	✓
Czech Republic	✓	-	-
Chile	-	✓	✓
France	✓	✓	✓
Germany	✓	-	-
Great Britain	✓	✓	✓
India	✓	✓	✓
Iran	-	-	✓
Ireland	✓	-	✓
Italy	✓	-	✓
Japan	-	✓	-
Kazakhstan	✓	✓	✓
Malaysia	✓	-	-
Mauritania	✓	-	-
Mauritius	-	✓	-
Nigeria	-	-	✓
Netherlands	✓	✓	✓
New Zealand	✓	-	-
Pakistan	✓	✓	✓
Portugal	-	-	✓
Russia	✓	✓	-
South Africa	✓	✓	-
South Korea	✓	✓	✓
Spain	✓	-	-
Tunisia	✓	-	-
Turkey	✓	✓	✓
USA	✓	✓	✓
Total	24	18	17

PROFESSIONAL DEVELOPMENT

KIMEP Faculty Members Studying Abroad, 2008-09*

College	Position, current degree	Degree to obtain/ Specialization	Country/University
BCB	1. Lecturer, MBA	PhD/Strategic Management	Sweden/Lund University
	2. Senior lecturer, MA	PhD/Statistics	UK/University of Bath
	3. Senior Lecturer, MBA	PhD/E-commerce	Netherlands/Eindhoven Technical University
	4. Senior lecturer, MPhil	PhD/Marketing	USA/University of Mississippi
CSS	1. Lecturer, MA	PhD/Political Science	USA/New School University of Social Research
	2. Lecturer, MA	PhD/Electronic Engineering	Netherlands/Eindhoven Technical University
	3. Lecturer, MSc	PhD/Politics	UK/University of Oxford
	4. Lecturer, MBA	PhD/Economics	USA/Michigan State University
	5. Senior Lecturer, MA	PhD/Political Science	USA/ University of South Carolina
	6. Senior Lecturer, MA	PhD/Political Science	Finland/Tampere University
	7. Senior Lecturer, MPA	PhD/Political Science and Public Policy	USA/ George Washington University
	8. Assistant Professor, MPhil	PhD/Public Policy and Management	USA/Rushmore University
LC	1. Instructor, BA	MA/Applied Linguistics and TESOL	UK/University of Leicester
	2. Lecturer, C.Sc	PhD/English language	Turkey/Middle East Technical University
	3. Lecturer, MAIJ	MA/Educational Management	UK/Leeds University
	4. Senior Lecturer, MA	PhD/Linguistics	UK/University of London
Total	16 faculty members	Masters degree PhD studies	2 14 15 universities

* As of the beginning of academic year

KIMEP Faculty Members Studying Abroad, 2007-08

College	Position, current degree	Degree to obtain/ Specialization	Country/University
BCB	1. Lecturer, MA	PhD/ Economics	USA/State University of New York
	2. Lecturer, MBA	PhD/ Strategic Management	Sweden/ Lund University
	3. Senior Lecturer, MPhil	PhD/Business Administration and Marketing	USA/University of Mississippi
	4. Senior Lecturer, MA	PhD/ Marketing	Switzerland/University of Geneva
	5. Senior Lecturer, MA	PhD/ Finance	USA/ University of Illinois
	6. Senior Lecturer, MA	PhD/ Statistics	UK/Bath University
CSS	1. Lecturer, MA	PhD/ Political Science	USA/New School University of Social Research
	2. Lecturer, MSc	PhD/Politics	UK/ Oxford University
	3. Lecturer, MBA	PhD/Economics	USA/Michigan State University
	4. Lecturer, MA	PhD/Electronic Engineering	Netherlands/Eindhoven Technical University
	5. Senior Lecturer, MA	PhD/Political Science	Finland/Tampere University
	6. Senior Lecturer, MA	PhD/Political Science	USA/ University of South Carolina
	7. Senior Lecturer, MA	PhD/Political Science and Public Policy	USA/ George Washington University
LC	1. Instructor, BA	MA/Applied Linguistics and TESOL	UK/University of Leicester
	2. Senior Lecturer, MA	PhD/Linguistics	UK/University of London
Total	15 faculty members	Masters degree PhD studies	1 14 15 universities

KIMEP Faculty Members Studying at KIMEP, 2007-09*

Academic year	Unit	Number of employees studying, by program				Total
		DBA	MATESOL	MBA	MPA	
2008-09	Bang College of Business	10	-	-	-	10
	Language Center	1	16	-	1	18
	Total	11	16	-	1	28
2007-08	Bang College of Business	4	-	-	-	4
	Language Center	1	10	1	1	13
	Total	5	10	1	1	17

* As of the beginning of academic year

RESEARCH ACTIVITY BY DEPARTMENTS

KIMEP Grants Awarded, Numbers:	2008-09	2007-08	2006-07	Total
Economics	-	-	1	1
Public Administration	3	-	-	3
Political Science	-	-	3	3
College of Social Sciences	3	-	4	7
Accounting	-	2	2	4
Finance	-	3	3	6
Management and Marketing	-	2	2	4
Operations Management and Information Systems	-	2	5	7
Bang College of Business	-	9	12	21
Language Center	-	-	1	1
Total	3	9	17	29

KIMEP Grants Awarded, Cost, USD:	2008-09	2007-08	2006-07	Total
Economics	-	-	500	500
Public Administration	4,100	-	-	4,100
Political Science	-	-	6,748	6,748
College of Social Sciences	4,100	-	7,248	11,348
Accounting	-	3,500	3,500	7,000
Finance	-	8,067	8,579	16,646
Management and Marketing	-	9,450	3,950	13,400
Operations Management and Information Systems	-	23,500	6,887	30,387
Bang College of Business	-	44,517	22,916	67,433
Language Center	-	5,000	2,000	7,000
Total	4,100	49,517	32,164	85,781

Non- KIMEP Grants Awarded, Numbers:	2008-09	2007-08	2006-07	Total
Economics	1	2	1	4
Journalism and Mass Communications	-	-	1	1
Public Administration	1	1	-	2
Political Science	1	-	-	1
College of Social Sciences	3	3	2	8
Accounting	-	1	1	2
Management and Marketing	-	-	2	2
Operations Management and Information Systems	-	1	-	1
Bang College of Business	-	2	3	5
Language Center	3	-	-	3
Total	6	5	5	16

Non-KIMEP Grants Awarded, Cost, USD:	2008-09	2007-08	2006-07	Total
Economics	14,000	56,750	9,600	80,350
Public Administration	1,000	7,000	-	8,000
Political Science	3,000	-	-	3,000
College of Social Sciences	18,000	63,750	9,600	91,350
Accounting	-	-	5,400	5,400
Finance	-	8,500	-	8,500
Management and Marketing	-	-	21,000	21,000
Operations Management and Information Systems	-	56,750	-	56,750
Bang College of Business	-	65,250	26,400	91,650
Language Center	80,200	48,000	-	128,200
Total	98,200	177,000	36,000	311,200

Consulting Contracts Carried Out, Numbers:	2008-09	2007-08	2006-07	Total
Political Science	2	2	-	4
College of Social Sciences	2	2	-	4
Accounting	-	1	-	1
Finance	1	8	2	11
Management and Marketing	-	2	-	2
Bang College of Business	1	11	2	14
College of Continuing Education	-	1	-	1
Total	3	14	2	19

Conferences Attended, Numbers:	2008-09	2007-08	2006-07	Total
Economics	7	4	7	18
Journalism and Mass Communications	11	7	32	50
Public Administration	10	4	2	16
Political Science	21	6	18	45
College of Social Sciences	49	21	59	129
Accounting	7	0	0	7
Finance	3	1	6	10
Management and Marketing	4	3	7	14
Operations Management and Information Systems	8	6	14	28
Bang College of Business	22	10	27	59
College of Continuing Education	1	0	0	1
Language Center	78	15	11	104
Total	150	46	97	293

Publications, Numbers:	2008-09	2007-08	2006-07	Total
Economics	14	13	9	36
Journalism and Mass Communications	4	4	3	11
Public Administration	38	7	4	49
Political Science	27	19	11	57
College of Social Sciences	83	43	27	153
Accounting	1	9	11	21
Finance	10	10	16	36
Management and Marketing	7	15	17	39
Operations Management and Information Systems	21	17	34	72
Bang College of Business	39	51	78	168
Language Center	76	35	43	154
Total	198	129	148	475



ALUMNI*

NUMBER AND SCOPE

Number of Alumni by Program, 1994-2009

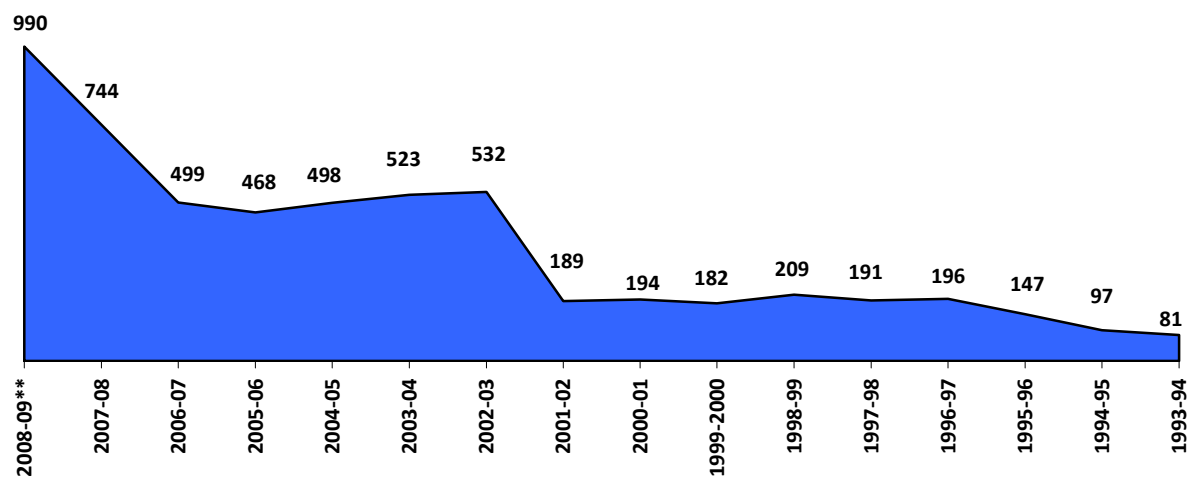
	2008-09**	2007-08	2006-07	2005-06	2004-05	2003-04	1994-2003	Total
BAE	128	78	70	36	47	29	-	388
BAIJ	34	17	8	2	-	-	-	61
BSc	519	403	215	195	192	164	251	1939
BSS	-	94	56	41	52	67	74	384
BSS PA	106	-	-	-	-	-	-	106
BSS PS	37	-	-	-	-	-	-	37
Total	824	592	349	274	291	260	325	2915
EMBA	-	25	23	29	68	105	233	483
ExMBA	11	-	-	-	-	-	-	11
MA	12	3	12	19	14	50	356	466
MAIJ	7	10	20	13	17	13	-	80
MBA	114	91	69	105	86	72	921	1458
MIR	6	8	12	10	7	2	-	45
MPA	16	15	14	18	15	21	183	282
Total	166	152	150	194	207	263	1693	2825
Grand Total	990	744	499	468	498	523	2018	5740

**Data effective as of 09 October 2009

Employment Rate of KIMEP Alumni, 2005-08, %

	BAE	BSc	BSS	BAIJ	Total	MBA	MIR	MAIJ	MA	MPA	Total	Grand Total
2007-08	95	92	89	88	92	96	100	100	100	100	97	93
2006-07	92	99	90	88	96	98	83	87	93	92	94	95
2005-06	93	98	94	100	96	97	100	100	94	93	97	97

Number of Alumni by Academic Years, 1994-2009



**Data effective as of 09 October 2009

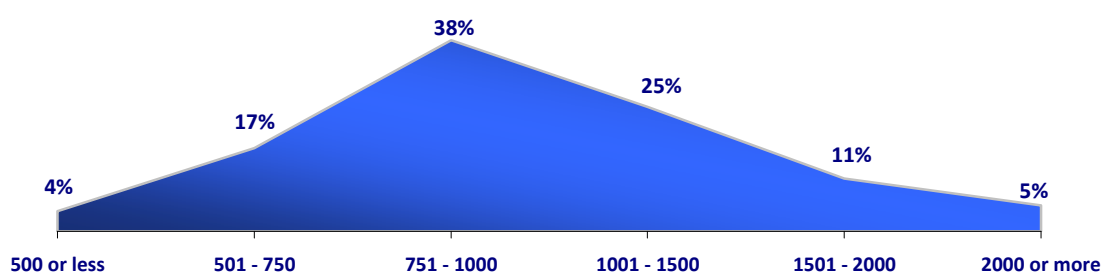
* Information for this part is provided by Enrollment Management Division, Center of Advising, Internship and Career, Corporate Development Department and QAIR

EMPLOYMENT AND SALARY

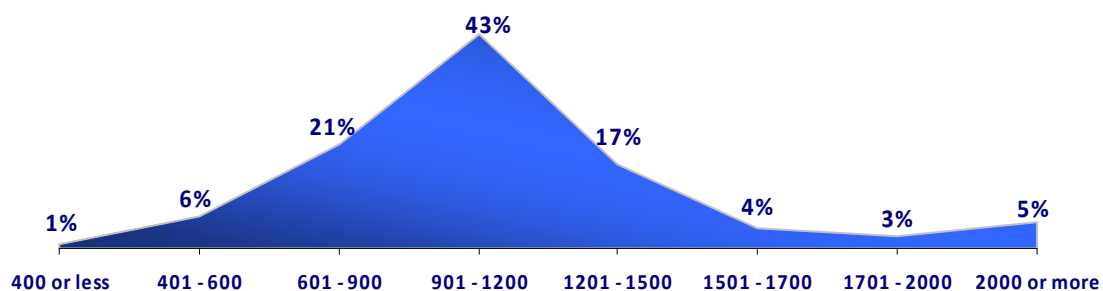
Factors Assisting in Getting First Job After Graduating from KIMEP, %

Factors	Bachelors		Masters		Total	
	2008	2007	2008	2007	2008	2007
Family	6	6	3	3	6	5
Friends	5	4	7	6	6	4
Internship	9	9	8	9	9	9
KIMEP Career Center	6	5	9	7	6	6
KIMEP education	33	36	28	35	32	36
KIMEP specialization	21	23	19	18	20	22
Other	9	8	6	13	8	9
Previous job	11	9	20	9	13	9
Total	100	100	100	100	100	100

Distribution of Alumni 2008 by Salary Ranges, USD



Distribution of Alumni 2007 by Salary Ranges, USD



Distribution of Alumni by Fields of Occupation, 2006-08, %

Occupation Fields	2008	2007	2006
Advertising	2.30	1.22	1.90
Audit	32.30	36.73	25.20
Banking	11.60	10.61	11.30
Construction	0.90	2.45	2.80
Education	3.20	12.24	13.40
Embassy, NGO, Public sector	2.00	1.63	2.10
Energy	0.90	0.41	0.90
Finance	10.40	3.67	10.20
Further graduate or postgraduate study	9.20	0.82	6.40
Insurance	0.60	2.04	0.00
Media	1.70	6.53	0.00
Oil & Gas	7.50	4.49	3.40
Production	2.60	2.45	3.80
Telecommunications	0.60	0.00	1.90
Trade/Services	13.00	14.29	15.40
Transport	1.20	0.41	1.30
Total	100	100	100



ACADEMIC PROGRAMS AND SPECIALIZATIONS*

GRADUATE PROGRAMS

DOCTORAL DEGREES	2009-10	2008-09	2007-08	2006-07
BANG COLLEGE OF BUSINESS (BCB)				
Doctor of Business Administration (DBA)				
Accounting	✓	✓	✓	✓
Finance	✓	✓	✓	✓
Management	✓	✓	✓	✓
Marketing	✓	✓	✓	✓
Operations Management & Information Systems		✓	✓	✓
Total	4	5	5	5
MASTER DEGREES	2009-10	2008-09	2007-08	2006-07
BANG COLLEGE OF BUSINESS (BCB)				
Master of International Law (LLM)	✓	✓		
Executive Master of Business Administration (ExMBA)	✓	✓	✓	✓
Master of Business Administration (MBA)				
Accounting	✓	✓	✓	✓
Finance	✓	✓	✓	✓
Information Systems		✓	✓	✓
Management	✓	✓	✓	✓
Marketing	✓	✓	✓	✓
Operations Management		✓	✓	✓
COLLEGE OF SOCIAL SCIENCES (CSS)				
Master in International Relations (MIR)	✓	✓	✓	✓
Master of Arts in Economics (MA)	✓			
Financial Analysis		✓	✓	✓
International Economics		✓	✓	✓
Public Policy Economics		✓	✓	✓
Master in Public Administration (MPA)	✓			
Financial Management		✓	✓	
Research & Information Technology				✓
Natural Resource Management				✓
Public Finance				✓
Public Management		✓	✓	✓
Public Policy		✓	✓	✓
Master of Arts in International Journalism (MAIJ)	✓			
Media Management		✓		✓
Print and Broadcast Journalism		✓	✓	✓
Public Relations		✓	✓	✓
LANGUAGE CENTER (LC)				
Master of Arts in Teaching English to Speakers of Other Languages (MA in TESOL)	✓	✓	✓	
Total	11	19	17	19

* Information for this part is mainly taken from KIMEP Catalogs of respective academic years; information for 2009-10 academic year is further verified by Bang College of Business and College of Social Sciences.

UNDERGRADUATE PROGRAMS

BACHELOR DEGREES	2009-10	2008-09	2007-08	2006-07
BANG COLLEGE OF BUSINESS (BCB)				
Bachelor of Science in Business Administration and Accounting (BSc)				
Accounting	✓	✓	✓	✓
Finance	✓	✓	✓	✓
Information Systems		✓	✓	✓
Management	✓	✓	✓	✓
Marketing	✓	✓	✓	✓
Operations Management		✓	✓	✓
Human Resource Management		✓	✓	✓
COLLEGE OF SOCIAL SCIENCES (CSS)				
Bachelor of Arts in Economics and Management (BAE)				
International Economics	✓			
Business Economics	✓	✓	✓	✓
Public Policy Economics		✓	✓	✓
Resource and Environmental Economics				✓
Bachelor of Arts in International Journalism (BAIJ)				
Media Management	✓	✓	✓	
Print, Broadcast and Online Journalism		✓	✓	
Public Relations	✓	✓	✓	
Bachelor of Social Sciences (BSS)				
Central Asian Politics		✓	✓	✓
Comparative Politics		✓		
History and Law			✓	
International Relations		✓	✓	✓
Foreign Policy and Diplomacy		✓		
International Security		✓		
Political Science			✓	✓
Public Administration				✓
Public Policy and Administration		✓	✓	
Public Management		✓		✓
Financial Management		✓		✓
Health Policy and Administration			✓	
Natural Resource Management		✓		✓
Bachelor of Social Sciences in International Relations (BSS in IR)				
Foreign Policy and Diplomacy	✓			
International Security	✓			
Political Science	✓			
Bachelor of Social Sciences in Public Administration (BSS in PA)				
Public Policy and Administration	✓			
Financial Management	✓			
Total	13	21	18	18

All reorganized into BSS in IR and BSS in PA



FINANCIAL AID AND FEES*

FINANCIAL AID

Corporate-Funded Financial Aid, 2006-09

Sponsors of Financial Aid	2008-09 thous. KZT			2007-08 thous. KZT			2006-07 thous. KZT		
	SU I-II	Spring	Fall	SU I-II	Spring	Fall	SU I-II	Spring	Fall
AGIP KCO	-	-	-	-	113	-	-	-	1,056
Almaty International Women Club	-	-	-	74	288	302	-	-	-
Apple City Group	-	-	-	-	-	-	69	407	33
Bilim-Central Asia	-	-	1,400	-	211	2,239	-	-	562
Citibank Kazakhstan	-	-	1,198	-	-	-	-	-	1,430
Deloitte&Touche LLP	-	-	-	244	-	-	244	-	819
Dr.Sumitro Djojohadikusumo	-	-	-	-	585	586	-	585	585
Ernst & Young	-	407	-	-	-	-	-	-	-
Erzhan Tatishev Foundation	550	1,473	1,466	340	619	506	83	-	-
Eurasia Foundation	132	337	-	-	1,844	1,906	-	1,227	1,911
Globus Education	-	240	480	-	-	-	-	-	-
Jeewoo Venture Capital Co., LTD	-	-	-	-	-	-	-	377	-
JSC "Procter and Gamble"	-	-	-	-	-	-	47	230	-
Karachaganak Petroleum Operating B.V.	-	-	-	-	56	253	-	-	314
Karazhanbasmunai	-	-	550	-	585	585	-	585	585
Kazenergy PF	-	724	-	-	-	-	-	-	-
Kazmunaigaz	-	-	-	-	1,350	900	-	-	-
Kazmunaigaz Consulting	-	-	-	22	56	44	-	-	-
Kazmunaigaz EP	-	-	3,348	-	-	-	-	-	-
KEGOC	-	-	-	210	280	283	-	-	-
KookminBank	-	-	-	241	2,630	1,953	-	-	-
Kus Zholy Foundation / KKB	-	-	-	175	2,245	2,683	-	-	-
Ministry of Education and Science	344	1,867	-	-	-	-	-	-	-
PetroKazakhstan Kumkol Resources	993	2,638	2,220	608	1,933	1,889	324	1,026	2,490
Pricewaterhouse Coopers LLP	-	-	689	-	3,774	-	-	-	-
State Presidential Stipend	-	-	-	386	965	965	386	965	965
Tarlan Scholarship	-	-	-	-	-	-	-	-	-
Tengizchevroil LLP	-	1,352	6,209	22	3,142	6,877	-	-	9,750
The Eurasia Foundation of Central Asia	-	-	-	-	1,847	1,931	63	934	1,947
Tomas Balco	75	179	179	-	-	-	-	-	-
Turgai Petroleum	-	-	100	-	400	140	-	-	-
Tyub-Karagan Scholarship	-	-	-	-	-	-	-	-	1,200
USAID Scholarship	-	-	-	-	-	-	-	106	-
US-Central Asia Education Foundation	1,074	13,193	12,861	-	4,596	4,376	-	-	-
Total	3,168	22,410	30,700	2,322	27,519	28,418	1,216	6,442	23,647
Trilateral Contracts		227,526			221,999			93,966	
Grand Total		283,804			280,258			125,271	

* Information for this part is taken from Catalogs of respective years, as well as provided by Enrollment Management Division; Corporate Development Department, Library; and Clerical Office.

KIMEP-Funded Financial Aid, 2006-09

Type of Financial Aid	2008-09 thous. KZT			2007-08 thous. KZT			2006-07 thous. KZT		
	SU I-II	Spring	Fall	SU I-II	Spring	Fall	SU I-II	Spring	Fall
Altyn Belgi Scholarship	3,782	11,862	10,297	2,495	6,650	6,057	797	2,301	2,404
Caucasus Scholarship	-	381	573	-	553	901	84	393	488
Central Asian Scholarship	590	1,553	2,179	786	2,400	3,190	1,042	3,397	3,914
DBA Scholarship	-	1,183	1,183	-	-	-	-	-	-
KIMEP Dean's Scholarship	-	1,283	1,421	-	4,089	4,838	-	1,018	1,194
KIMEP Family Work-Study Tuition Discounts	-	-	-	1,670	5,908	6,616	995	2,728	3,740
KIMEP Prepayment Discount	-	-	2,600	-	-	-	-	-	-
KIMEP Presidential Scholarship	-	2,637	3,003	-	6,926	9,046	-	2,878	3,125
KIMEP Scholarship	-	-	302	-	-	-	-	-	-
KIMEP Tuition Discount 25%	359	492	373	-	-	-	-	-	-
KIMEP Tuition Discount 50%	-	170	83	-	-	-	-	-	-
KIMEP/EURASIA Scholarship	22	41	-	-	180	263	16	249	639
KIMEP/US-Central Asia Education Foundation	189	1,975	1,823	83	2,048	1,829	-	-	-
Nursultan Nazarbayev Scholarship	1,420	6,271	6,863	1,339	5,177	6,280	302	1,406	1,705
Scholarship for Undergraduate Foreign Students	364	1,035	1,076	-	-	-	-	-	-
Tuition Waiver for Children of KIMEP Employees	1,668	4,386	4,241	673	3,494	3,735	1,058	2,192	2,012
Work-Study Financial Aid for Children from Single Parent	8,235	20,138	10,254	-	-	-	-	-	-
Work-Study Tuition Discounts for Children of Pensioners	901	2,383	1,780	721	1,657	1,723	276	817	1,290
Work-Study Tuition Discounts for Children with a Single Parent	-	-	-	4,452	12,234	12,523	2,528	6,832	9,225
Work-Study Financial Aid for Multiple Student Families	2,220	6,834	4,526	-	-	-	-	-	-
Work-Study Tuition Discounts for Orphans	2,098	6,295	5,538	1,295	4,676	4,659	754	2,532	2,276
Total	21,848	68,919	58,115	13,514	53,944	61,660	7,852	26,743	32,012
KIMEP Tuition Waiver Letters	446	1,523	1,294	679	1,495	3,039	294	920	2,015
	373	1,141	1,363	183	818	1,170	63	792	466
Grand Total	22,667	71,583	60,772	14,376	56,257	65,869	8,209	28,455	34,493

TUITION

Tuition Fees for Kazakhstan and CIS Countries Citizens, 2006-10, KZT

Programs	2009-10*	2008-09	2007-08	2006-07
BSc per 1 credit	26,300	22,650	18,880	16,000
3 credits/ 1 course	78,900	67,950	56,640	48,000
BSS per 1 credit	24,300	20,950	17,460	14,800
3 credits/ 1 course	72,900	62,850	52,380	44,400
BAE per 1 credit	24,300	20,950	17,460	14,800
3 credits/ 1 course	72,900	62,850	52,380	44,400
BAIJ per 1 credit	19,300	16,600	13,840	11,730
3 credits/ 1 course	57,900	49,800	41,520	35,190
MBA per 1 credit	38,000	32,800	27,340	23,170
3 credits/ 1 course	114,000	98,400	82,020	69,510
MA per 1 credit	36,300	31,330	26,110	22,130
3 credits/ 1 course	108,900	93,990	78,330	66,390
MPA per 1 credit	28,200	24,330	20,280	17,190
3 credits/ 1 course	84,600	72,990	60,840	51,570
MIR per 1 credit	28,200	24,330	20,280	17,190
3 credits/ 1 course	84,600	72,990	60,840	51,570
MAIJ per 1 credit	26,700	23,000	19,170	16,250
3 credits/ 1 course	80,100	69,000	57,510	48,750
MA in TESOL per 1 credit	26,700	23,000	19,170	-
3 credits/ 1 course	80,100	69,000	57,510	-
LLM per 1 credit	38,000	32,800	-	-
3 credits/ 1 course	114,000	98,403	-	-
DBA per 1 credit	38,000	131,440	109,540	109,545
3 credits/ 1 course	114,000	394,320	328,620	328,635

* All undergraduate students that entered KIMEP in 2009-10, pay KZT 26,300 per credit and KZT 78,900 per 3-credit course, irrespective of chosen program

Tuition Fees for Non-CIS Foreign Countries Citizens, 2006-09, KZT

Programs		2009-10*	2008-09	2007-08	2006-07
BSc	per 1 credit	26,300	34,180	28,490	24,150
	3 credits/ 1 course	78,900	102,540	85,470	72,450
BSS	per 1 credit	24,300	31,740	26,450	22,420
	3 credits/ 1 course	72,900	95,220	79,350	67,260
BAE	per 1 credit	24,300	31,740	26,450	22,420
	3 credits/ 1 course	72,900	95,220	79,350	67,260
BAIJ	per credit	19,300	24,900	20,750	17,590
	3 credits/ 1 course	57,900	74,700	62,250	52,770
MBA	per 1 credit	38,000	49,330	41,110	34,840
	3 credits/ 1 course	114,000	147,990	123,330	104,520
MA	per 1 credit	36,300	46,890	39,080	33,120
	3 credits/ 1 course	108,900	140,670	117,240	99,360
MPA	per 1 credit	28,200	36,620	30,520	25,870
	3 credits/ 1 course	84,600	109,860	91,560	77,610
MIR	per 1 credit	28,200	36,620	30,520	25,870
	3 credits/ 1 course	84,600	109,860	91,560	77,610
MAIJ	per 1 credit	26,700	34,660	28,890	24,490
	3 credits/ 1 course	80,100	103,980	86,670	73,470
MA in TESOL	per 1 credit	26,700	34,660	28,890	-
	3 credits/ 1 course	80,100	103,980	86,670	-
LLM	per 1 credit	38,000	49,330	-	-
	3 credits/ 1 course	114,000	147,990	-	-
DBA	per 1 credit	38,000	131,440	109,540	109,545
	3 credits/ 1 course	114,000	394,320	328,620	328,635

* All undergraduate students that entered KIMEP in 2009-10, pay KZT 26,300 per credit and KZT 78,900 per 3-credit course, irrespective of chosen program

FEES

Student Dormitory Fees per Month, KZT

	2009-10	2008-09	2007-08	2006-07**
Bed in deluxe double room	-	11,442	10,402	-
Bed in room with telephone (3-4 floors)	9,700	9,273	8,430	7,151
Bed in deluxe room with telephone	-	-	13,020	10,402
Bed in renovated room with telephone (fifth floor)	13,200	12,650	11,500	9,750
Bed in deluxe room (fifth floor)	-	14,322	-	-
Bed in deluxe triple room with telephone	-	-	-	9,101
Bed in renovated room with telephone (second floor)	13,200	10,450	-	-
Bed in deluxe room (second floor)	-	12,650	-	-

** In 2006-07 some rooms were not equipped with telephones

Some Other Fees, KZT

	2009-10	2008-09	2007-08
Student activities fee (per year)	cancelled	cancelled	4,000
Late payment fee	8,800	8,820	7,670
Late registration fee (per course)	4,500	4,470	3,890
Late monthly payment interest	cancelled	cancelled	1,300
Official transcript (3 copies)	1,700	1,750	1,530
Withdrawal administrative fee	4,500	4,470	3,890
Student Card	80	80	80
Replacement of Student Card	1,300	1,300	1,300
Duplicate and replacement of Diploma	1,700	1,750	1,530
English for Level	60,000	81,140	70,560
Introduction to Computers, Test	2,300	2,030	1,770
Introduction to Computers, Course	-	20,280	17,640
Pre-MA courses (per course)	46,300	40,250	35,000
Pre-MBA courses (per course)	46,300	40,250	35,000



CAMPUS AND FACILITIES*

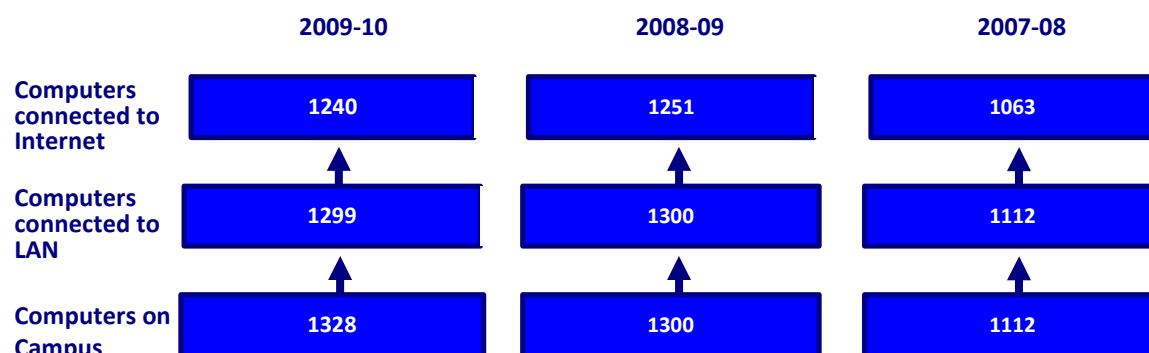
Campus Technical Characteristics, 2008-09, m²

	Fall 2009	Spring 2009	Fall 2008	Spring 2008
Total proprietary space of buildings	41,404	41,404	41,404	36,075.6
Instructional and laboratory proprietary space of buildings	8,149.5	8,668.9	9,433	6,260
Proprietary space of dormitories	7,075	7,075	7,075	7,075
Proprietary space of dining services	1,629.95	1,629.95	1,629.95	1,147.75
Proprietary space of gyms and other covered sport facilities	1,444.4	1,444.4	1,444.4	728.8
Medical Center	153.6	153.6	153.6	33.9

Computer Facilities, 2006-10

	2009-10	2008-09	2007-08	2006-07
Student Computer Facilities				
Computer Laboratories	18	18	14	14
Student Computer Areas	4	4	4	3
Computers in the Laboratories and Areas	494	492	385	359
Students per Computer Ratio	10,8	10	12,7	12
All Computer Facilities				
Computers on Campus	1328	1300	1112	990
Computers connected to LAN	1299	1300	1112	890
Computers connected to Internet	1240	1251	1063	850
Internet Speed				
Internet Access Speed	10Mbps	7.5Mbps	7.5Mbps	4.5Mbps

Dynamics of KIMEP Computer Facilities, 2006-10



* Information for this part is provided by Plant Department, Computer and Information Systems Center, Library, Department of Communication and Technical Devices and Media Laboratory.

Library Holdings, Space and Associated Payments, 2006-09

	2008-09	2007-08	2006-07
BOOKS, TOTAL	92 676	90 118	85 935
Collection in Use			
English	57 636	55 509	51 752
Russian	25 245	4 937	4 599
Kazakh	9 795	792	705
Old Collection			
Russian		20 000	20 000
Kazakh	<i>Old collection and Collection in use have been merged</i>	8 880	8 880
E-RESOURCES, TOTAL	10	9	9
EBSCO	✓	✓	✓
INTAS	✓	✓	✓
JURIST (Paragraph)	✓	✓	✓
KIMEP Reference Database	✓	✓	✓
JSTOR	✓	✓	✓
SSRN	✓	✓	✓
EconLit	-	-	✓
EBRARY	✓	✓	✓
ABI/INFORM Global	✓	✓	✓
EIEWS	✓	✓	-
TOL (Transitions Online)	✓	-	-
PERIODICALS, TOTAL	187	220	170
Scholarly journals	70	56	53
Other periodicals	117	164	117
FACILITIES			
Space, m ²	3 388	3 388	3 388
Seats	455	455	450
Computers	71	71	68
ASSOCIATED PAYMENTS			
Textbook security deposit (fixed), KZT	15,000	15,000	15,000
Textbook rental fee (withdrawn from deposit)	25% of item's replacement cost	25% of item's replacement cost	25% of item's replacement cost
Library Card Replacement, KZT	3,000 (plastic card)	1,500 (laminated) 3,000 (plastic card)	1,500

KIMEP Teaching Aid Facilities

As of Fall 2009

In-class Teaching Aid Equipment		Out-of-class Teaching Support Equipment	
Acoustic Systems	40	Automatic Telephone Stations	4
Audio Recorders	60	Dimmer blocks	2
DVD Player	7	Illumination Projectors	20
Interwrite boards	2	Mini Disc Player	2
LCD Projectors	68	Mixer board	3
Microphones	40	Radio Microphones	54
Overhead Projectors	40	Sound Processor	1
Screens	70	Video Cameras	4
Speaker Systems	40	Video Projectors	2
TV sets	13		

KIMEP Media Lab Equipment

As of Fall 2009

Computers	11	Photographic Cameras	9
Video-editing	4	Professional	5
Standard	7	Standard	4
Printers	3	Video Cameras	7
A3 format printer	1	Professional	3
A4 format printer	2	Standard	4
Dictaphones	7	TV Sets	2
Professional	4	Big screen flat panel wall TV	1
Standard	3	Standard TV	1
A3 Scanners	2	Home Theatre System	1
		Professional Video Recorders	3



UNIVERSITY FINANCES*

KIMEP Budget, 2008-09

Description	KZT	USD
Number of credits	151,214	151,214.00
Tuition	3,460,071,270	23,067,141.80
Grants and sponsorship	24,676,839	164,512.26
Commercial programs	77,838,882	518,925.88
Other Revenues	130,853,893	872,359.28
TOTAL REVENUE (TR)	3,693,440,885	24,622,939.23
Payroll Fund	2,384,578,563	15,897,190.42
Operational Expenses	416,790,930	2,778,606.20
Stationery/Copying	18,730,149	124,867.66
Public Utilities	51,753,106	345,020.70
Telecommunications/Subscriptions	33,038,484	220,256.56
Repair and Maintenance Expenses	35,906,748	239,378.32
Other Department's Expenses	121,692,794	811,285.29
Medical insurance	35,493,239	236,621.59
Marketing	28,115,061	187,433.74
Graduation / Board of Trustees	8,130,717	54,204.78
Recruitment	22,646,366	150,975.77
Financial	10,661,674	71,077.83
Taxes	31,999,705	213,331.37
Research (without Research Assistants)	1,880,440	12,536.27
Custodial	3,737,063	24,913.75
Audit, new accounting software	13,005,385	86,702.57
Financial Aid	181,090,769	1,207,271.80
TOTAL OPERATING EXPENSES (TOE)	2,982,460,262	19,883,068.42
Computers for labs	7,471,501	49,810.01
Equipment and furniture	19,489,452	129,929.68
Books, Periodicals, etc.	13,939,042	92,926.95
Other Projects	197,205,052	1,314,700.35
TOTAL GENERAL CAPITAL EXPENDITURES (GCE)	238,105,047	1,587,366.98
Net Result	472,875,576	3,152,503.84

KIMEP Budget Dynamics, 2006-09, mln. USD

Academic Year	TR	TOE	GCE	Net Result
2008-09	24.6	19.9	1.6	3.1
2007-08	24.5	18.2	7.3	-0.1
2006-07	18.9	14.5	4.4	0

* Information for this part is provided by Department of Finance and Accounting.



ADMINISTRATIVE STAFF*

NUMBER AND SCOPE

Staff Headcount, as of Fall 2009**

Division	Management	Subordinates	Total
Central Administration			
Office of the President	2	5	7
Office of the Executive Vice-President	2	3	5
Office of the Vice-President of Academic Affairs	1	3	4
Office of the Vice-President of Planning and Development	1	1	2
Office of the Assistant Vice-President for IT and HR	1	3	4
Office of the Dean of Enrollment Management	1	1	2
Office of the Dean of Student Affairs	2	1	3
Planning and Development			
Corporate Development Department	2	2	4
Department of Quality Assurance and Institutional Research	1	6	7
Governance, Foundation and Joint Stock Affairs, Legal Office	2	2	4
Academic Affairs			
Bang College of Business	4	14	18
College of Social Sciences	6	11	17
College of Continuing Education	5	9	14
School of General Education	1	2	3
Language Center (<i>includes Korean Studies Center</i>)	4	7	11
Library	2	36	38
International Relations Office	1	4	5
Advising, Internship and Career Services	1	13	14
Administration and Finance			
Computer and Information Systems Center	2	33	35
Finance and Accounting Department	4	18	22
Human Resources Department	-	10	10
Support Services Division	14	245	259
Translation/Interpretation Department	1	4	5
Enrollment Management			
Admission	3	11	14
Enrollment Services	1	2	3
Office of the Registrar	1	7	8
Student Financial Services Department	1	3	4
Student Affairs			
Dormitory	1	4	5
Medical Center	1	6	7
Sports Complex	1	1	2
Student Center	1	1	2
Total	70	468	538

** Staff Headcount includes some faculty members, who occupy dual positions: as faculty members and as administrative heads.

- * 1) All KIMEP employees who are not faculty members are considered in this publication as KIMEP administrative staff
 2) Information for this part is provided by HR Department; Enrollment Management Division; and College of Continuing Education

Staff Headcount, as of Fall 2008*

Division	Management	Subordinates	Total
Central Administration			
Office of the President	3	7	10
Office of the Executive Vice-President	2	2	4
Office of the Vice-President of Academic Affairs	2	3	5
Office of the Assistant Vice-President of Administration and Finance	1	1	2
Office of the Assistant Vice-President for IT and HR	1	1	2
Office of the Vice President of Advancement	1	1	2
Office of the Dean of Enrollment Management	1	-	1
Office of the Dean of Student Affairs	3	1	4
- departments reporting to the President			
Consultancy for Central Asia	1	-	1
Department of Quality Assurance and Institutional Research	1	9	10
Governance, Foundation and Joint Stock Affairs	1	-	1
Legal Office	1	1	2
Academic Affairs			
Bang College of Business	3	16	19
College of Social Sciences	2	20	22
College of Continuing Education	4	14	18
School of General Education	2	2	4
School of Law	1	2	3
Language Center	1	10	11
Korean Studies Center	1	2	3
Computer and Information Systems Center	2	40	42
Library	2	40	42
International Relations Office	1	4	5
Administration and Finance			
Budget Director and Controller	1	-	1
Finance and Accounting Department	4	21	25
Human Resources Department	2	8	10
Support Services Division	12	254	266
Translation/Interpretation Department	1	3	4
Advancement			
Career and Employment Center	1	1	2
Corporate Development Department	2	4	6
Department of Marketing and Public Relations	1	5	6
Enrollment Management			
Office of the Registrar	2	8	10
Recruitment and Admission	3	10	13
Student Financial Services Department	2	4	6
Student Affairs			
Dormitory	1	4	5
Medical Center	1	8	9
Sports Center	1	1	2
Student Center	1	2	3
Total	71	510	581

* Staff Headcount includes some faculty members, who occupy dual positions: as faculty members and as administrative heads

PROFESSIONAL DEVELOPMENT

Staff Participation in Professional Trainings at College of Continuing Education, 2006-09

Program	SU2009	S2009	F2008	SU2008	S2008	F2007	SU2007	S2007	F2006
American Management Association Program	-	-	-	8	18	23	13	43	41
Open Enrollment and Certificate Programs	1	1	1	3	5	6	16	18	28
Professional Development Programs	21	20	6	50	2	34	33	50	100
Total	22	21	7	61	25	63	62	111	169

Administrative Staff Studying Abroad, 2007-09

Year	Position/Unit	Degree to Obtain	Field of Study	Country
2008-09*	Assistant/BCB	Master	Business Administration	Czech Republic
	Manager/Library	Master	Library and IS	USA
	Information Counselor/Admission&Information Center	Master	Economics	USA
2007-08	Specialist/Admission and Information Center	Master	Economics in Education	USA
	Coordinator/CCE	Master	Accounting	Australia
	Executive Assistant/Office of Academic Affairs	Master	Public Administration	USA
	Manager/Library	Master	Library and IS	USA
	Director/Korean Center	PhD	Korean Studies	South Korea

* As of the beginning of academic year

Administrative Staff Studying at KIMEP, 2008-09**

Division	Number of employees studying, by program							
	MA	MAIJ	MATESOL	MBA	MIR	MPA	DBA	Total
Academic Affairs								
Bang College of Business	-	-	1	3	1	-	2	7
College of Continuing Education	1	-	-	3	-	-	-	4
College of Social Sciences	-	-	-	2	-	3	-	5
International Relations Office	-	-	-	-	-	1	-	1
Korean Studies Center	-	-	-	-	1	-	-	1
Language Center	-	-	2	-	-	1	1	4
Office of the Vice-President of Academic Affairs	-	-	-	2	-	-	-	2
School of General Education	-	-	-	1	-	-	-	1
Administration and Finance								
Human Resources Department	-	-	-	2	-	-	-	2
Office of the Budget Director and Controller	-	-	-	1	-	-	-	1
Support Services Division	1	-	-	-	-	-	1	2
Translation/Interpretation Department	-	-	-	1	-	-	-	1
Advancement								
Corporate Development Department	-	-	-	2	-	-	-	2
Department of Marketing and Public Relations	-	-	-	1	-	-	-	1
Enrollment Management								
Office of the Registrar	-	-	-	3	-	-	-	3
Recruitment and Admission	-	1	1	1	-	-	1	4
Student Financial Services Department	-	-	-	2	-	1	-	3
President's Office								
Department of Quality Assurance and Institutional Research	-	-	-	2	-	-	1	3
Legal Office	-	-	-	1	-	-	-	1
President's Office	1	-	-	2	-	-	1	4
Student Affairs								
Student Affairs Office	-	-	-	1	-	-	-	1
Student Center	-	-	-	-	-	1	-	1
Total	3	1	4	30	2	7	7	54

**As of the beginning of academic year

Administrative Staff Studying at KIMEP, 2007-08*

Division	Number of employees studying, by program							
	MA	MAIJ	MATESOL	MBA	MIR	MPA	DBA	Total
Office of the Executive Vice-President	-	-	-	1	-	-	-	1
Departments Reporting to the President								
President's Office	-	-	-	1	-	-	1	2
Department of Quality Assurance and Institutional Research	-	-	-	1	-	-	-	1
Academic Affairs								
Bang College of Business	-	-	1	3	-	-	-	4
College of Continuing Education	-	-	-	1	-	-	-	1
College of Social Sciences	-	-	-	-	1	2	-	3
Computer and Information Systems Center	-	-	-	1	-	-	-	1
Language Center	-	-	2	-	-	-	-	2
Library	-	-	-	2	-	-	-	2
Office of the Vice-President of Academic Affairs	-	-	-	2	-	-	-	2
Administration and Finance								
Finance and Accounting Department	-	-	-	1	-	-	-	1
Office of the Budget Director and Controller	-	-	-	1	-	-	-	1
Office of the Vice-President of Administration and Finance	-	-	-	-	-	-	1	1
Support Services Division	1	-	-	2	-	-	-	3
Translation/Interpretation Department	-	-	-	1	-	-	-	1
Advancement								
Corporate Development Department	-	-	-	1	-	-	-	1
Department of Marketing and Public Relations	-	-	-	2	-	-	-	2
Enrollment Management								
Office of the Registrar	-	-	-	4	-	-	-	4
Recruitment and Admission	-	1	1	1	-	-	1	4
Student Financial Services Department	-	-	-	1	-	2	-	3
Student Affairs								
Student Affairs Office	-	-	-	1	-	-	-	1
Student Center	-	-	-	-	-	1	-	1
Total	1	1	4	27	1	5	3	42

*As of the beginning of academic year

Success Stories

of KIMEP 2007-2008 Alumni



NAILYA UALIBEKOVA, EMBA, 2008

CHIEF-ACCOUNTANT,
KASPI BANK

In the course of my work I often meet colleagues that graduated from KIMEP, they are true professionals. That is why I am convinced that today KIMEP is the best higher education institution in the Republic, and I am proud to be among its Alumni.

KIMEP allowed me to deepen my knowledge and broaden my professional horizons.

ANARBEEK BAKTYBAYEV, EMBA, 2008

OPERATIONS MANAGER,
HENKEL CENTRAL ASIA AND CAUCASUS, LLP

KIMEP – is a perfect school which gives excellent theoretical basis and practical knowledge for managers. Knowledge obtained in KIMEP together with gained experience opened for me a great opportunity for further personal development.

In KIMEP, I learned to analytically approach given tasks and find best optimal solutions. As a Head of Supply Chain department, I every day face situations that require good knowledge of finance, accounting, operations management, business law and strategy. KIMEP has given me a powerful incentive for my personal growth and carrier development.



GULMARA RYSBEKOVA, BSc, 2006 and MBA, 2007

HEAD OF MARKETING OF FINANCIAL PORTALS DIVISION,
KAZKOMMERTSBANK

I'm grateful to KIMEP for all the professors who have given us good knowledge and who have coached us over the years of study. KIMEP's projects, deadlines, teamwork and presentations made me organized, responsible and target-oriented person. After graduating from BSc program, it was much easier for me to graduate from MBA over 9 months due to the knowledge that I've received over 4 years of study at a bachelor program of KIMEP.

I would like to thank the whole KIMEP community that contributed to my career, especially the Career Center of KIMEP that helped me to find my current job. I'm glad to work at KAZKOM and I can say that the knowledge that I've received at KIMEP is the best asset that I've acquired in my life.



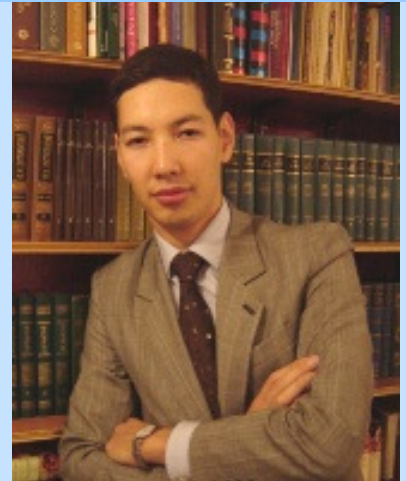
Success Stories

of KIMEP 2001-2005 Alumni

BAKHTIYAR BATYRBEK, BSc, 2005

INVESTMENT MANAGER,
KAZYNA CAPITAL MANAGEMENT

The decision to study in KIMEP is the one I will never regret. The benefits of the education did not stop after graduation, and I can still enjoy its pay-off. KIMEP gave me incredible career prospects from the first year of studies; it helped me a lot in the postgraduate studies in one of the leading UK business schools; and most importantly it paved me the way to the business community both locally and internationally through a wide alumni network. Today I am proud to be a part of this community – thank you KIMEP!



AIDA SAPARGAZINOVA, EMBA, 2004

GENERAL DIRECTOR,
LACTALIS- FOODMASTER, KAZAKHSTAN

For over 15 years KIMEP has been preparing specialists of high international level for the benefit of Kazakhstani economy. Many top managers of “FoodMaster” Company worked and studied at the same time. It was not easy - instructors did not indulge us, we had to put all our physical and mental efforts to study, but the result exceeded all expectations.

Today I am confident that knowledge obtained at KIMEP is in demand and helps me in my work.



ARMAN ZHOLDASBEKOV, MBA, 2001

GENERAL DIRECTOR,
PLAST-INVEST COMPANY

I entered KIMEP in 1999 being already an entrepreneur. At that time, many people asked me why I decided to study at KIMEP, whereas I could earn a living. However, I felt the crisis in my professional evolution and the need to raise social status.

The two years had passed very rapidly and I can declare that it was the most exciting time in my life! At present I am the Head of Plast Invest LLP, fast growing company involved in water network construction business and the largest dealer of Chevron-Texaco Polyethylene Pipes plant based in Atyrau.



Success Stories

of KIMEP 1998-1999 Alumni



RAUSHAN RAISKHANOVA, MBA, 1999

**DEPUTY GENERAL MANAGER,
NORTH CASPIAN OPERATING COMPANY**

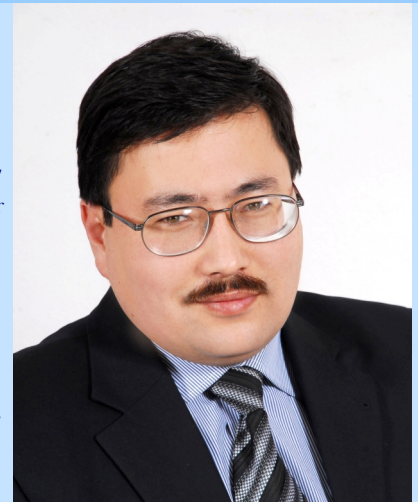
Saying that KIMEP gave me a lot is saying nothing at all – all that was obtained from KIMEP remains topical as of today, and is just polished over years. For myself personally I would define studying at KIMEP as a school of forming and of teamwork. And when each of you finds his or her place at a large and various labor market, I would like you to always remember the best cases of your team work in KIMEP. The composition of your surrounding will always change, but the main principles of communication and of mutual support will remain the same as what you’ve been taught at KIMEP. There is no big difference between doing your small homework assignment and realization of a grand project at work. The rules of the game are just the same.

RINAD TEMIRBEKOV, MBA, 1999

**EXECUTIVE DIRECTOR,
EURASIA FOUNDATION OF CENTRAL ASIA**

For more than 10 years I every day feel myself ascertained that receiving an education at KIMEP was one of the most valuable investments in my personal development. MBA program helped me forming a complex vision of all aspects of management and obtaining a deep systematic knowledge which is effectively used in practice.

KIMEP has provided me with the following advantages: team building skills, as a comprehension of mutual responsibility in front of other team members; understanding that management is an art of compromises and balance of resources and interests, where there is no the only unique and right decision; and acquaintance with the international standards of education and communication when the freedom of thinking, communications culture, and efficiency of decision-making process are highly appreciated.



GALINA KALININA, MBA, 1998

**ENERGY SECTOR CONTROLLER,
SIEMENS LLP, CENTRAL ASIA**

My experience at KIMEP fulfilled my highest expectations and proved to be an excellent step in my career development.

Within a vibrant and supportive learning environment, KIMEP discovers, disseminates, and applies new knowledge through teaching and learning, research and creative activity, community involvement, and partnerships.

The KIMEP gives a national and international voice to innovation in our country, taking a lead role in development of high-qualified specialists for our economy.



KEY CONTACT DETAILS

PRESIDENT

President	Chan Young Bang, Ph.D. bang@kimep.kz , +7 (727) 270-42-00 (# 2005) 050010 Kazakhstan, Almaty, Abai Ave. 2, Room # 102
Vice President of Planning and Development	Ewan Simpson, Ph.D. simpson@kimep.kz , +7 (727) 270-44-85 (# 2001) 050010 Kazakhstan, Almaty, Abai Ave. 2, Room # 103
Corporate Development Department	Balzhan Suzhikova, Candidate of Sciences, Director bsuzhikova@kimep.kz , +7 (727) 270-42-26 (#2044) 050010 Kazakhstan, Almaty, Abai Ave. 2, Room # 401
Department of Governance, Foundation and Joint-Stock Company Affairs, Legal Issues	Olga Uzhegova, MBA, Director of Development uzhegova@kimep.kz , +7 (727) 270-42-06 (#2016) 050010 Kazakhstan, Almaty, Abai Ave. 2, Room # 110
Department of Quality Assurance and Institutional Research	Mansiya Kainazarova, Candidate of Sciences, Deputy Director mansiya@kimep.kz , +7 (727) 270-44-86 (#2362) 050010 Kazakhstan, Almaty, Abai Ave. 2, Room # 407

EXECUTIVE VICE PRESIDENT

Executive Vice President	Habib Rahman, Ph.D. rahman@kimep.kz , +7 (727) 270-42-05 (# 2008) 050010 Kazakhstan, Almaty, Abai Ave. 2, Room # 105
Office of Executive Vice President	Rassim Karibov, MBA, Director karibov@kimep.kz , +7 (727) 270-42-07 (# 2011) 050010 Kazakhstan, Almaty, Abai Ave. 2, Room # 107

ACADEMIC AFFAIRS

Vice President of Academic Affairs	Dana Stevens, Ph.D. stevens@kimep.kz , +7 (727) 270-44-67 (# 2139), 050010 Kazakhstan, Almaty, Abai Ave. 2, Room # 112
Bang College of Business	Sang Hoon Lee, Ph.D., Dean shlee@kimep.kz , +7 (727) 270-44-66 (#2255), 050010 Kazakhstan, Almaty, Abai Ave. 2, Room # 302-7
College of Social Sciences	John Dixon, Ph.D., Dean dixon@kimep.kz , +7 (727) 270-42-46 (# 3274) 050010 Kazakhstan, Almaty, Abai Ave. 4, Hall # 4
College of Continuing Education	Bulent Dumlupinar, Ph.D., Dean bulentd@kimep.kz , +7 (727) 270-44-40 (# 2306) 050010 Kazakhstan, Almaty, Abai Ave. 2, Room # 334 Alma Raissova, Candidate of Sciences, Acting Dean raissova@kimep.kz , +7 (727) 270-44-32, (#1173) 050010 Kazakhstan, Almaty, Abai Ave. 4, Room # 105, CCE
School of General Education	Sanithia Boyd, D.Ed, CPA, CMA, CFE, CrFA, Interim Dean sboyd@kimep.kz , +7 (727) 270-42-43 (#3245) 050010 Kazakhstan, Almaty, Abai Ave. 4, Room # 505
Language Center	Kenneth Saycell, MA, Director ksaycell@kimep.kz , +7 (727) 270-43-71 (#2264) 050010 Kazakhstan, Almaty, Abai Ave. 2, Room # 228b
Library	Joseph Luke, MLIS, MA, JUDr, Director libinstr@kimep.kz , +7 (727) 237-47-53 (#2504) 050010 Kazakhstan, Almaty, Abai Ave. 2, Room # 109
International Relations Office	Ronald Voogdt, MBA, Director rvoogdt@kimep.kz , +7 (727) 270-43-80 (#2258) 050010 Kazakhstan, Almaty, Abai Ave. 2, Room # 411
Advising, Internship and Career Center	Saule Bulebayeva, LLB, Interim Director sauleb@kimep.kz , +7 (727) 270-43-39 (#3207) 050010 Kazakhstan, Almaty, Abai Ave. 4, Room # 204

ADMINISTRATION AND FINANCE

Assistant Vice President for Informational Technologies and Human Resources	<i>Sergei Katsovich, MBA</i> sergei@kimep.kz , + 7 (727) 270-42-11 (#2017) 050010 Kazakhstan, Almaty, Abai Ave. 2, Room # 109
Budget Director and Controller	<i>Daniyar Zhamenov, MBA</i> zhamenov@kimep.kz , + 7 (727) 270-44-10 (#2039) 050010 Kazakhstan, Almaty, Abai Ave. 2, Room # 119
Chief Accountant	<i>Elena Danilova, MBA</i> accountk@kimep.kz , + 7 (727) 270-42-24 (#2037) 050010 Kazakhstan, Almaty, Abai Ave. 2, Room # 117
Support Services Director	<i>Nurlan Bolysbekov, MA</i> nbolysbekov@kimep.kz , + 7 (727) 237-47-55 (#2555) 050010 Kazakhstan, Almaty, Abai Ave. 4, Plant

ENROLLMENT MANAGEMENT

Dean's Office	<i>Ronald Voogdt, MBA, Interim Dean</i> rvoogdt@kimep.kz , + 7 (727) 270-43-80 (#2258) 050010 Kazakhstan, Almaty, Abai Ave. 2, Room # 411
Office of the Registrar	<i>Dinara Seitova, MSc, Ph.D., Acting Registrar</i> sdinara@kimep.kz , + 7 (727) 270-44-40 (#2356) 050010 Kazakhstan, Almaty, Abai Ave. 2, Room # 304
Office of Recruitment and Admission	<i>Natalya Miltseva, MA, Director</i> shars@kimep.kz , + 7 (727) 270-42-13 (#3211) 050010 Kazakhstan, Almaty, Abai Ave. 4, Registration and Admission Office
Student Financial Services Department	<i>Oxana Shegay, MBA, Director</i> raxaus@kimep.kz , + 7 (727) 237-47-93 (#1017) 050010 Kazakhstan, Almaty, Abai Ave. 4, Financial Services Office
Office of Enrollment Services	<i>Anastasiya Manoilenko, Diploma, Director</i> nastyia@kimep.kz , + 7 (727) 270-43-22 (#3191) 050010 Kazakhstan, Almaty, Abai Ave. 4, Registration and Admission Office

STUDENT AFFAIRS

Dean of Student Affairs	<i>Shiraz Paracha, MA</i> sparacha@kimep.kz , + 7 (727) 237-48-00 (#1081) 050010 Kazakhstan, Almaty, Abai Ave. 2, Room # 111, Dormitory building
Medical Center	<i>Bayan Nurgaliyeva, Diploma, Head Doctor</i> n_bayan@kimep.kz , + 7 (727) 237-48-05 (#1087) 050010 Kazakhstan, Almaty, Abai Ave. 2, Dormitory building
Sports Complex	<i>Yergazy Orazaliyev, Diploma, Director</i> erik@kimep.kz , + 7 (727) 270-44-42 (#2187), 050010 Kazakhstan, Almaty, Abai Ave. 2, Sports Center
Student Center	<i>Olga Lee, MBA, Director</i> olgalee@kimep.kz , + 7 (727) 270-44-40 (#2315), 050010 Kazakhstan, Almaty, Abai Ave. 2, Student Center
Student Dormitory	<i>Zulfiyat Almukhanova, Diploma, Director</i> zulfiyat@kimep.kz , + 7 (727) 237-47-71 (#1246), 050010 Kazakhstan, Almaty, Abai Ave. 2, Dormitory building